

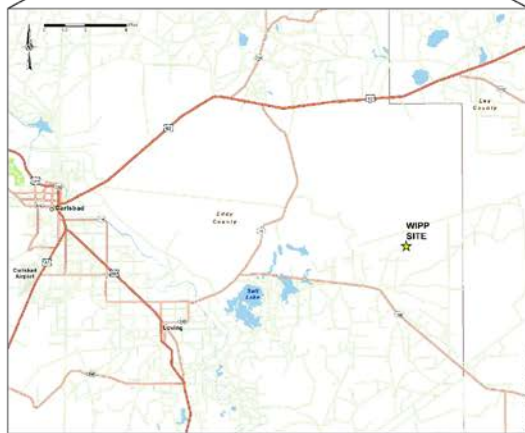
ATTACHMENT G1
APPENDIX G1-B

DRAWINGS

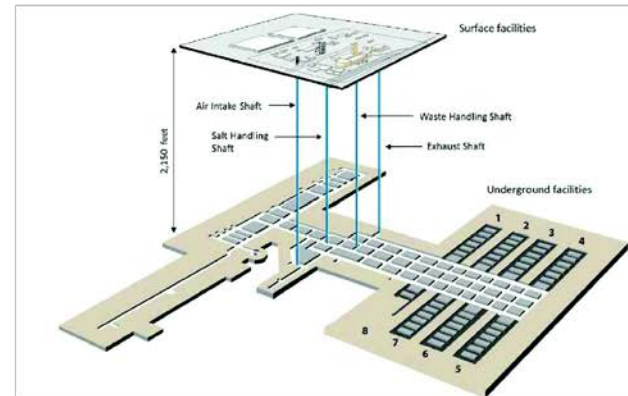
WIPP PANEL CLOSURE
WASTE ISOLATION PILOT PLANT
CARLSBAD, NEW MEXICO

(This page intentionally blank)

WIPP PANEL CLOSURE CARLSBAD, NEW MEXICO



INDEX OF DRAWINGS	
DRAWING NO.	TITLE
262-001	WIPP PANEL CLOSURE (WPC) TITLE SHEET
262-002	WPC LOCATIONS
262-003	TYPICAL PANEL LAYOUT AND MINED ENTRY CROSS-SECTIONS
262-004	WPC DETAILS - BULKHEAD AND ROM SALT LOCATIONS
262-005	WPC DETAILS - BULKHEAD FRONT VIEW AND ATTACHMENT DETAIL



A2018-07-18 ISSUED FOR CLIENT REVIEW
 REV. YYYY-MM-DD DESCRIPTION

GG KJC WTIWIT
 DESIGNED PREPARED REVIEWED APPROVED

CLIENT
 NUCLEAR WASTE PARTNERSHIP LLC



DENVER OFFICE
 44 UNION BLVD, STE. 300
 LAKEWOOD, COLORADO 80228
 USA
 (303) 480-0640
 www.golden.com

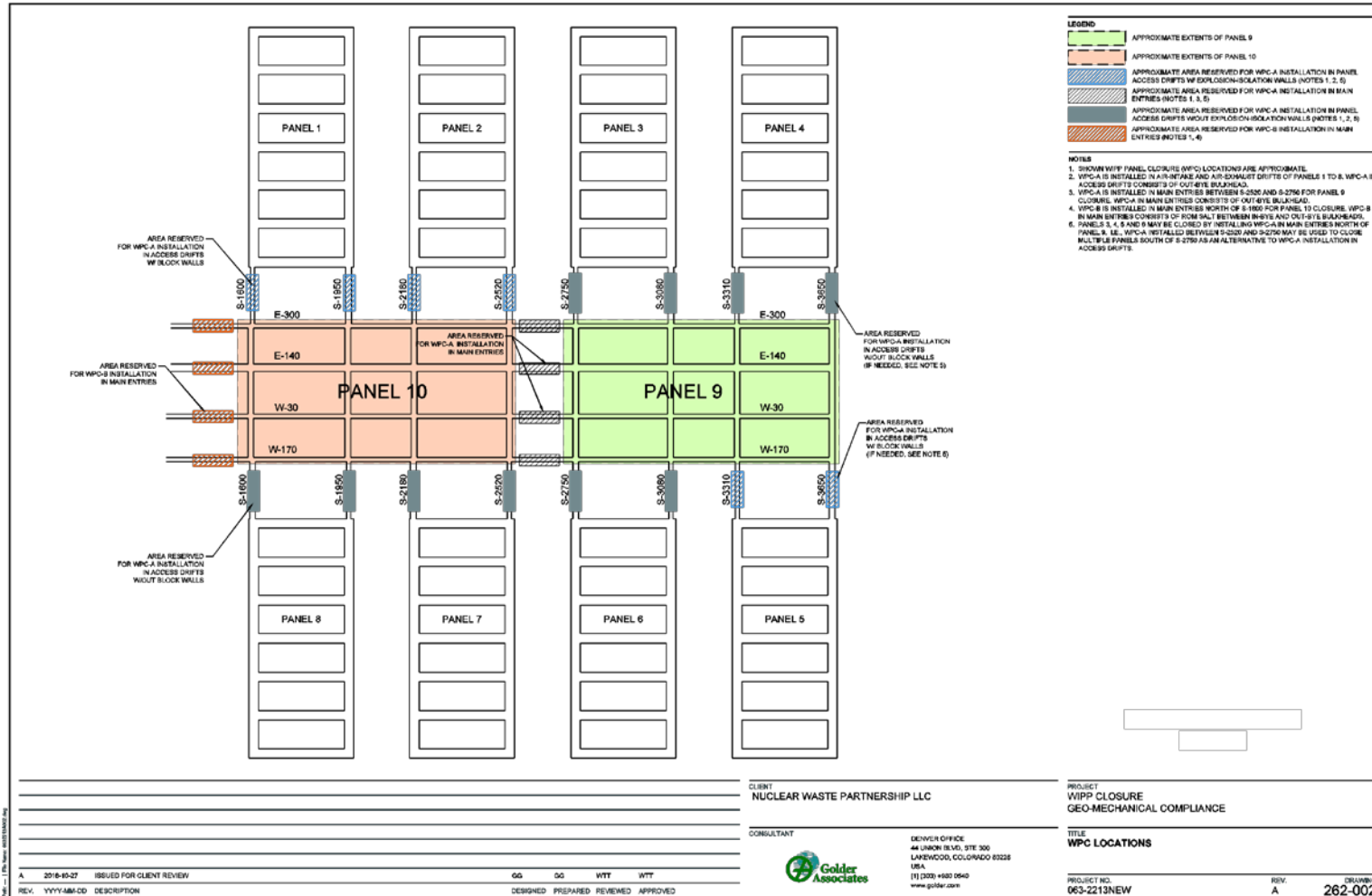
PROJECT
 WIPP CLOSURE
 GEO MECHANICAL COMPLIANCE

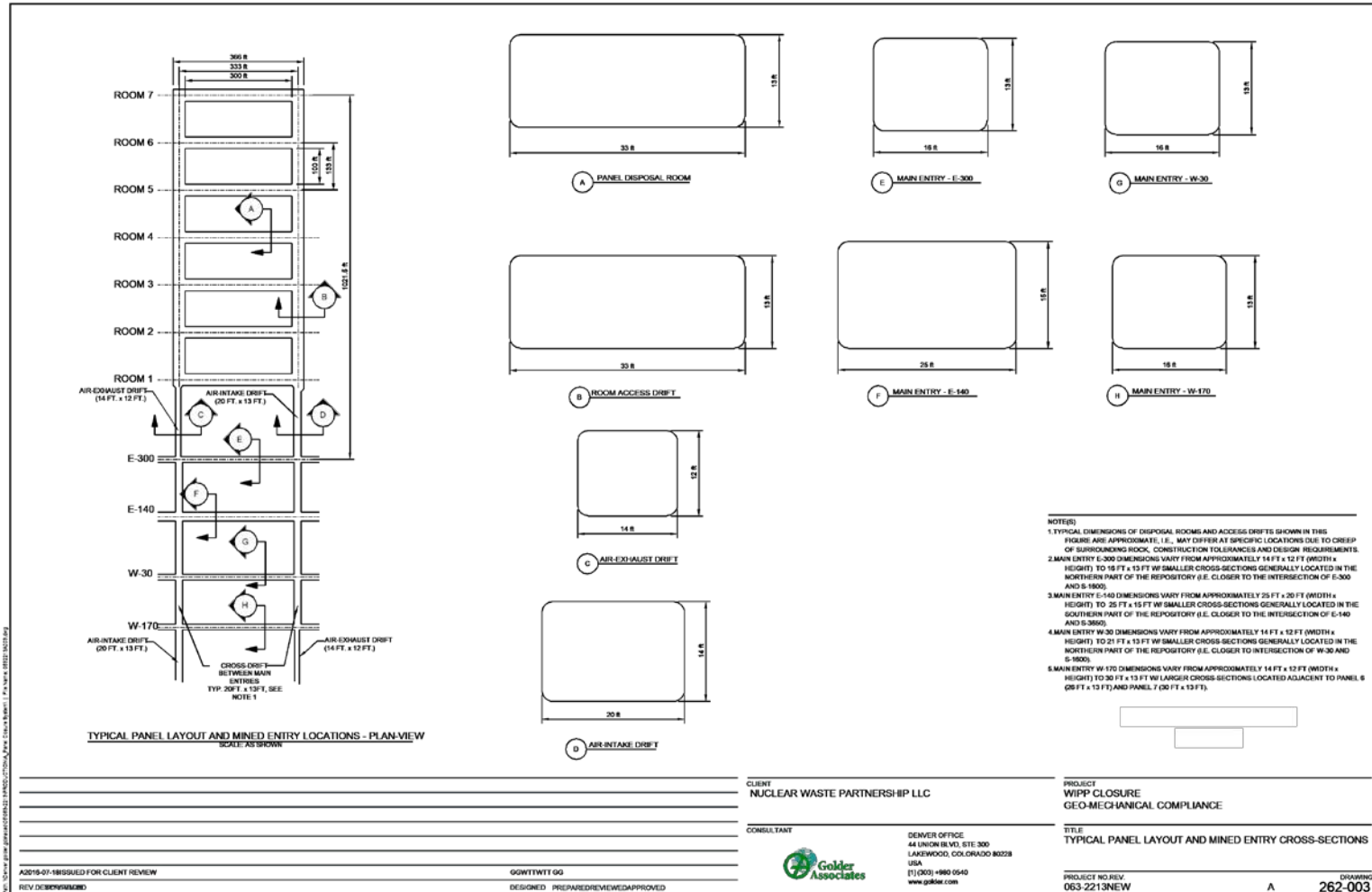
TITLE
 WIPP PANEL CLOSURE (WPC) TITLE SHEET

PROJECT NO.
 063-2213NEW

REV.
 A

DRAWING
 262-001





(This page intentionally blank)