



Department of Energy

Carlsbad Field Office
P. O. Box 3090
Carlsbad, New Mexico 88221

June 29, 2026

Mr. JohnDavid Nance, Chief
Hazardous Waste Bureau
New Mexico Environment Department
2905 Rodeo Park Drive East, Building 1
Santa Fe, NM 87505-6303

Subject: Class 1 Permit Modification Notifications, Waste Isolation Pilot Plant
Hazardous Waste Facility Permit Number: NM4890139088-TSDF

Dear Mr. Nance:

The purpose of this letter is to provide the New Mexico Environment Department, Hazardous Waste Bureau, the enclosed Class 1 Permit Modification Notification for the following items:

- Update Attachment D, Table D-1, *Resource Conservation and Recovery Act Emergency Coordinators*
- Update Attachment D, Figure D-3, *Underground Escape and Evacuation Map*
- Update Hoisting Capability Description to include use of Shaft #5 (Utility Shaft) for Underground Emergency Egress if Needed in Permit Attachment D, Permit Attachment E, and Permit Attachment F

We certify under penalty of law that this document and all attachments were prepared under our direction or supervision according to a system designed to assure that qualified personnel properly gather and evaluate the information submitted. Based on our inquiry of the person or persons who manage the system, or those persons directly responsible for gathering the information, the information submitted is, to the best of our knowledge and belief, true, accurate, and complete. We are aware that there are significant penalties for submitting false information, including the possibility of fine and imprisonment for knowing violations.

Mr. Michael Gerle, Director, Environmental Regulatory Compliance Division, is your point of contact regarding any technical questions or comments. Mr. Gerle can be reached at (575) 988-5372.

Sincerely,

Signatures on File

Mark Bollinger
Manager
Carlsbad Field Office

Ken Harrawood
Program Manager
Salado Isolation Mining Contractors, LLC

Enclosure

| | |
|--------------------|-----|
| M. Hall, CBFO | *ED |
| M. Gerle, CBFO | ED |
| V. Ballew, CBFO | ED |
| Z. Lepchitz, CBFO | ED |
| A. Ward, CBFO | ED |
| V. Diaz, NMED | ED |
| A. Donahue, NMED | ED |
| R. Maestas, NMED | ED |
| M. McLean, NMED | ED |
| B. Moffet, NMED | ED |
| W. Bauer, SIMCO | ED |
| R. Chavez, SIMCO | ED |
| D. Danford, SIMCO | ED |
| S. Davis, SIMCO | ED |
| A. Dunn, SIMCO | ED |
| R. Flynn, SIMCO | ED |
| M. Greer, SIMCO | ED |
| J. Hower, SIMCO | ED |
| M. Jones, SIMCO | ED |
| R. Salness, SIMCO | ED |
| J. Settle, SIMCO | ED |
| S. Strong, SIMCO | ED |
| A. Waldram, SIMCO | ED |
| E. Bhakta, SIMCO | ED |
| B. St. John, SIMCO | ED |
| K. Barnhart, SIMCO | ED |
| M. Cook, LATA | ED |
| D. Ganaway, LATA | ED |
| S. Harper, LATA | ED |
| J. Haschets, LATA | ED |
| M. Lunsford, LATA | ED |
| C. Marrs, LATA | ED |
| E. Picazo, LATA | ED |
| M. Serrano, LATA | ED |
| R. Chavez, LATA | ED |
| J. Haschets, LATA | ED |
| J. Nelson, LATA | ED |
| E. Dominguez, LATA | ED |
| K. Urquidez, LATA | ED |

*ED denotes electronic distribution

Class 1 Permit Modification Notifications

- 1. Update Attachment D, Table D-1, *Resource Conservation and Recovery Act Emergency Coordinators***
- 2. Update Attachment D, Figure D-3, *Underground Escape and Evacuation Map***
- 3. Update Hoisting Capability Description to include use of Shaft #5 (Utility Shaft) for Underground Emergency Egress if Needed in Permit Attachment D, Permit Attachment E, and Permit Attachment F**

**Waste Isolation Pilot Plant
Carlsbad, New Mexico**

WIPP Permit Number - NM4890139088-TSDF

June 2026

Table of Contents

| | |
|--|----|
| Table of Contents..... | i |
| Acronyms and Abbreviations..... | ii |
| Overview of the Permit Modification Notification..... | 1 |
| Attachment A Description of the Class 1 Permit Modification Notifications | 1 |
| Table 1. Class 1 Hazardous Waste Facility Permit Modification Notification | 2 |
| Item 1..... | 3 |
| Description | 3 |
| Basis | 3 |
| Discussion..... | 3 |
| Revised Permit Text: | 4 |
| Item 2..... | 5 |
| Description | 5 |
| Basis | 5 |
| Discussion..... | 5 |
| Revised Permit Text: | 6 |
| Item 3..... | 9 |
| Description | 9 |
| Basis | 9 |
| Discussion..... | 10 |
| Revised Permit Text: | 12 |
| Appendix A..... | 15 |

Acronyms and Abbreviations

| | |
|------------|---|
| AIS | Air Intake Shaft |
| CFR | Code of Federal Regulations |
| DOE | U.S. Department of Energy |
| NMAC | New Mexico Administrative Code |
| NMED | New Mexico Environment Department |
| MSHA | Mine Safety and Health Administration |
| MOC | Management and Operating Contractor |
| Permit | Waste Isolation Pilot Plant Hazardous Waste Facility Permit |
| Permittees | U.S. Department of Energy and Salado Isolation Mining Contractors LLC |
| PMN | Permit Modification Notification |
| RCRA | Resource Conservation and Recovery Act |
| UG | underground |
| WIPP | Waste Isolation Pilot Plant |

Overview of the Permit Modification Notifications

This document contains three Class 1 Permit Modification Notifications (**PMNs**) for the Waste Isolation Pilot Plant (**WIPP**) Hazardous Waste Facility Permit (**Permit**) Number NM4890139088-TSDF.

These PMNs are being submitted by the U.S. Department of Energy (**DOE**) and Salado Isolation Mining Contractors LLC, collectively referred to as the Permittees, in accordance with Permit Part 1, Section 1.3.1, (20.4.1.900 New Mexico Administrative Code (**NMAC**) incorporating Title 40 Code of Federal Regulations (**CFR**) §270.42(a)). The PMNs in this document are necessary to notify the New Mexico Environment Department (**NMED**) of changes which impact the Permit. These changes do not reduce the ability of the Permittees to provide continued protection to human health and the environment.

The requested modification to the Permit and any related supporting documents are provided in this PMN. The proposed modification to the text of the Permit has been identified using red text and double underline and a ~~strikeout~~ font for deleted information.

Attachment A
Description of the Class 1 Permit Modification Notifications

Table 1. Class 1 Hazardous Waste Facility Permit Modification Notification

| Item No. | Affected Permit Section | Change Description | Category |
|----------|--|--|----------|
| 1 | Attachment D, Table D-1, <i>Resource Conservation and Recovery Act Emergency Coordinators</i> | This modification updates the Emergency Coordinators list to reflect the removal of one RCRA Emergency Coordinator at the WIPP facility. | B.6.d |
| 2 | Attachment D, Table D-2, <i>Emergency Equipment Maintained at the Waste Isolation Pilot Plant</i> Attachment D, Figure D-3, <i>Underground Escape and Evacuation Map</i> | This modification replaces the current Underground Escape and Evacuation Map to replace this figure with the most recent revision and updates emergency equipment. | A.1 |
| 3 | Attachment D, Table D-2, <i>Emergency Equipment Maintained at the Waste Isolation Pilot Plant</i> Attachment E, Table E-1, <i>Inspection Schedule/Procedures</i> Attachment F, Table F-1, <i>TRU Mixed Waste Management and Emergency Response Job Titles and Descriptions</i> | This modification updates the hoisting capability description in the Permit to include use of Shaft #5 (Utility Shaft) for underground emergency egress if needed. | A.1 |

Item 1

Description

This modification updates the Resource Conservation and Recovery Act (**RCRA**) Emergency Coordinators list to reflect the removal of one new RCRA Emergency Coordinator at the WIPP facility. Permit Attachment D is updated with the following changes:

- Table D-1, *Resource Conservation and Recovery Act Emergency Coordinators*
 - Remove J.R. (James) Bailey, (575) 234-8276

Basis

This change is classified as "General Facility Standards, Contingency Plan: Changes in name, address, or phone number of coordinators or other persons or agencies identified in the plan" and is therefore a Class 1 modification pursuant to 20.4.1.900 NMAC (incorporating 40 CFR §270.42, Appendix I, B.6.d).

Discussion

This change is needed to update the list of persons qualified to act as the RCRA Emergency Coordinator and to ensure the respective information is accurate and current. This list must be kept up to date pursuant to 20.4.1.500 NMAC (incorporating 40 CFR §264.52(d)). The Permittees are removing J.R. (James) Bailey from the list of RCRA Emergency Coordinators.

Revised Permit Text:

**Table D-1
Resource Conservation and Recovery Act Emergency Coordinators¹**

| Name | Address* | Office Phone | Personal Phone* | 24-Hour Emergency Phone |
|--------------------------------|-----------------|-------------------------------------|------------------------|--------------------------------|
| J.E. (Joseph) Bealler | | (575) 234-8276 or (575) 234-8916 | | (575) 234-8111 |
| | | | | |
| P.J. (Paul) Paneral | | (575) 234-8498 | | (575) 234-8111 |
| A.C. (Andy) Cooper | | (575) 234-8197 | | (575) 234-8111 |
| C.J. (Chris) Belis | | (575) 628-5851 | | (575) 234-8111 |
| B.R. (Bobby) Franco | | (575) 234-8163 | | (575) 234-8111 |
| | | | | |
| R.E. (Eric) Chavez | | (575) 234-5831 | | (575) 234-8111 |
| D.L. (Donald) Journey | | (575) 234-8216 | | (575) 234-8111 |
| R.H. (Robert) Valenzuela | | (575) 234-8799 | | (575) 234-8111 |
| J.R. (James) Bailey | | (575) 234-8276 | | (575) 234-8111 |
| | | | | |
| D.J. (Derek) Tweedy | | (575) 234-8272 | | (575) 234-8111 |
| J.W. (Justin) Bailey | | (575) 234-8276 | | (575) 234-8111 |
| J.N. (Jacob) Galindo | | (575) 234-8276 | | (575) 234-8111 |
| D.W. (Devlin) Willingham | | (575) 234-8276 | | (575) 234-8111 |
| S.B. (Samuel) Vasquez | | (575) 234-8276 | | (575) 234-8111 |
| C.L. (Cody) Rich | | (575) 234-8276 | | (575) 234-8111 |
| T.B. (Trevor) Dominguez | | (575) 234-8276 | | (575) 234-8111 |
| D.D. (Dario) Corral | | (575) 234-8276 | | (575) 234-8111 |
| T.K. (Taren) Wright | | (575) 234-8276 | | (575) 234-8111 |
| E.T. (Eric) Galindo | | (575) 234-8276 | | (575) 234-8111 |
| M.A. (Michael) Harris | | (575) 234-8276 | | (575) 234-8111 |
| G.A. (Gary) Collis, Jr. | | (575) 234-8276 | | (575) 234-8111 |
| F.R. (Fidencio) Gomez | | (575) 234-8276 | | (575) 234-8111 |

* NOTE: Personal information (home addresses and personal phone numbers) has been removed from informational copies of this Permit.

¹ For every shift, one qualified RCRA Emergency Coordinator serves as the primary, and a second qualified RCRA Emergency Coordinator is available to serve as the alternate.

Item 2

Description

Permit Attachment D is updated with the following changes:

- Table D-2, *Emergency Equipment Maintained at the Waste Isolation Pilot Plant*
 - Mine Pager Phones
 - Added “Shaft #5 (Utility Shaft) Collar and Underground Station” to the Location column
- Figure D-3, *Underground Escape and Evacuation Map*
 - Replaces this figure with the most recent revision

Basis

This change is classified as an “Administrative and informational change” and is, therefore, a Class 1 modification pursuant to 20.4.1.900 NMAC (incorporating 40 CFR §270.42, Appendix I, A.1).

Discussion

This modification replaces the Underground Escape and Evacuation Map with an updated version depicting underground evacuation routes to Shaft #5, also known as the Utility Shaft, designates the Utility Shaft as a secondary emergency exit and updates the location of the designated assembly area near the Utility Shaft which contains a mine pager phone, miner’s aid station, and evacuation maps.

These changes are needed to update Figure D-3 to depict current underground evacuation routes and assembly areas pursuant to Permit Attachment D, Sections D-8b and D8d and to reflect the current underground configuration. This change also requires an update to Table D-2 to incorporate new Mine Pager Phones found at the Shaft #5 (Utility Shaft).

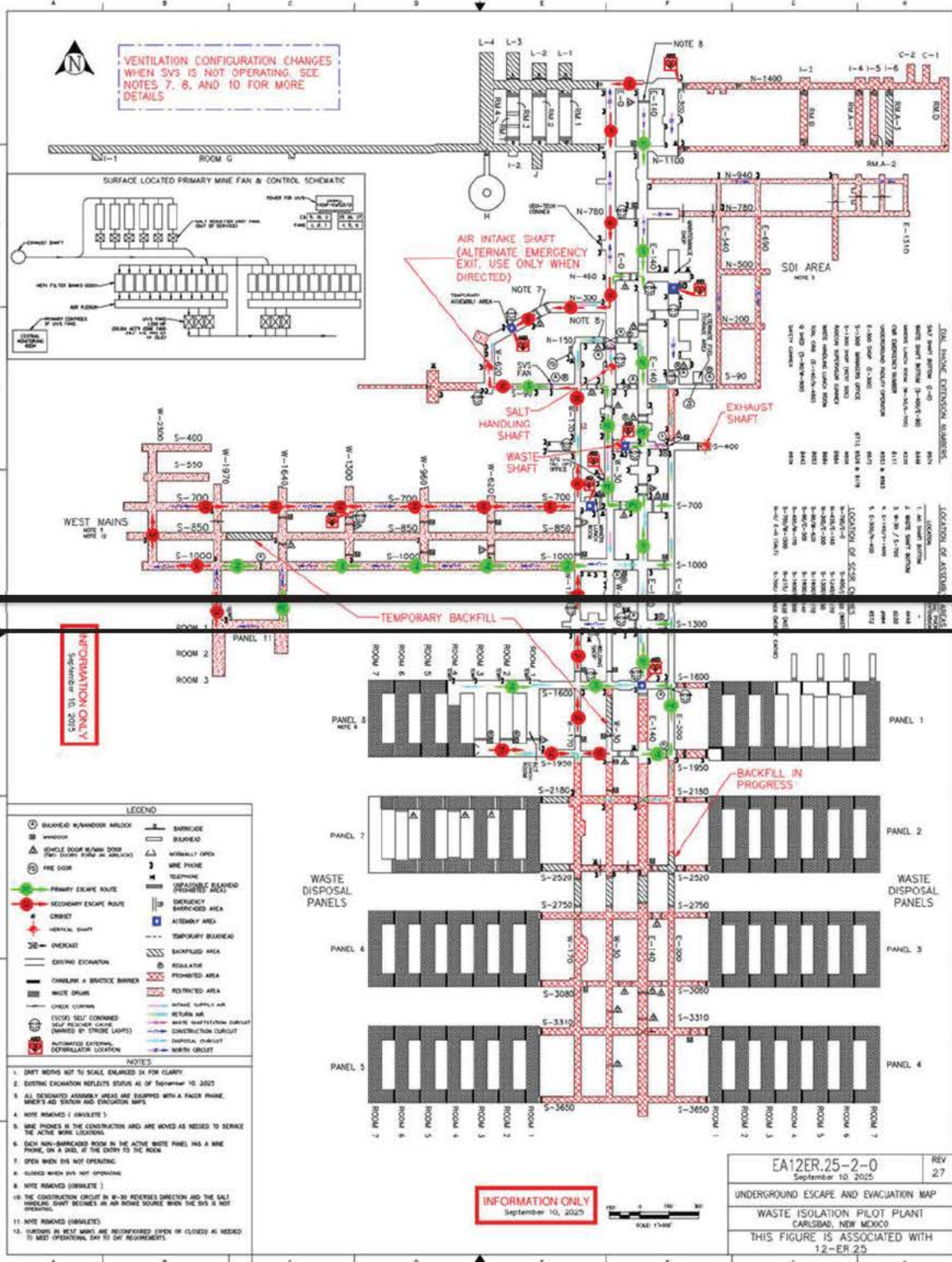
Permit Attachment D identifies in Section D-8d, *Plan for Underground Evacuation* that detailed descriptions of escapeways and underground escape map are included in the Underground Escape and Evacuation Plan on file at the WIPP facility, as required by Mine Safety and Health Administration (**MSHA**), 30 CFR §57.11053, for underground mining situations. The MSHA required map takes precedence over Figure D-3, *Underground Escape and Evacuation Map*, should an underground mine related event occur necessitating a change to the evacuation routes.

Revised Permit Text:

ATTACHMENT D
RCRA CONTINGENCY PLAN

Table D-2
Emergency Equipment Maintained at the Waste Isolation Pilot Plant

| Equipment | Description and Capabilities | Location |
|--|--|---|
| Communications | | |
| Site Notification System; Underground Evacuation Alarm System | For surface, alarms and notifications transmitted over paging channel of the public address system, manually initiated; for underground, audible alarm | Site-wide |
| Public Address System | Includes intercom phones; handset stations and loudspeaker assemblies | Site-wide |
| Mine Pager Phones | Battery-operated paging system | Underground at E300 Maintenance Shop, S550/W30, S700/W30, S1600/E140, SH Shaft Collar and Underground Station Waste Shaft Collar and Underground Station, <u>Shaft #5 (Utility Shaft) Collar and Underground Station</u> ; – surface at Support Building (Building 451, FSM desk, CMR, lamproom), Safety and Emergency Services Facility (Building 452, <u>Emergency Services</u> workstation area, Mine Rescue Room) |



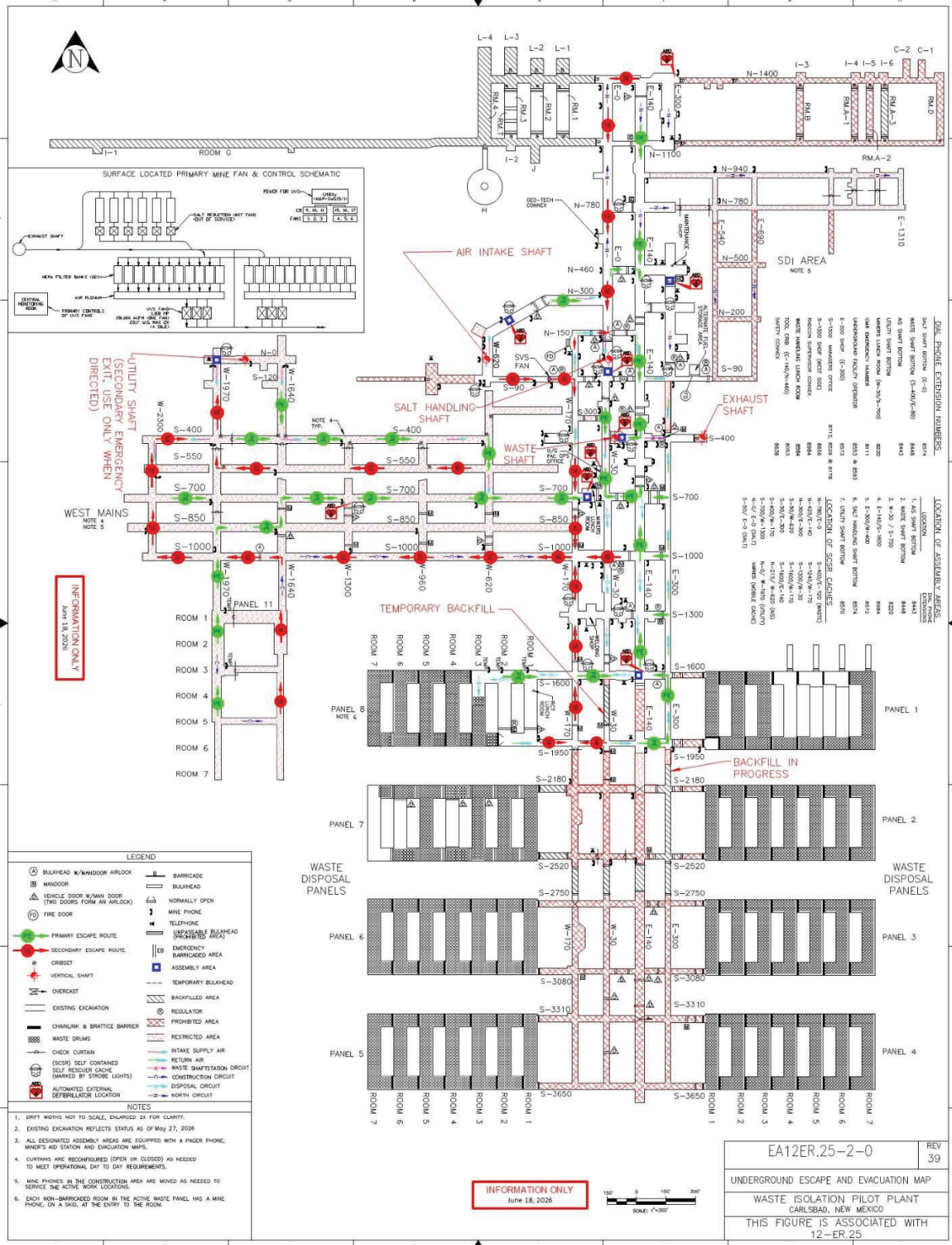


Figure D-3
Underground Escape and Evacuation Map

Item 3

Description

This modification updates the emergency hoisting capability description in the Permit to include use of Shaft #5, also known as the Utility Shaft for underground emergency egress, if needed. Permit Attachment D, *RCRA Contingency Plan*, Permit Attachment E, *Inspection Schedule, Process and Forms*, and Permit Attachment F, *Facility Personnel Permit Training Program* are updated with the following changes:

- Permit Attachment D, Table D-2, *Emergency Equipment Maintained at the Waste Isolation Pilot Plant*
 - Miners First Aid Stations
 - Added “Shaft #5 (Utility Shaft) Area” to the Location column
 - Emergency Hoist
 - Added “and Shaft #5 (Utility Shaft)” to the Description and Capabilities Column
 - Added “Shaft #5 (Utility Shaft) surface area” to the Location Column
- Permit Attachment E, Table E-1, *Inspection Schedule/Procedures*
 - Air Intake Shaft Hoist
 - Added “and Shaft #5 (Utility Shaft)” to System/Equipment Name column
 - Added “HW-Hoist Operations Log to the Procedure Number and Inspection Criteria^h” column
- Permit Attachment F, Table F-1, *TRU Mixed Waste Management and Emergency Response Job Titles and Descriptions*
 - Inspector
 - Added “Shaft #5 (Utility Shaft) to position description,”

Basis

This change is classified as "Replacement with functionally equivalent equipment, upgrade, or relocate emergency equipment listed" pursuant to 20.4.1.900 NMAC (incorporating 40 CFR §270.42 Appendix I, B.6.b) and is, therefore, a Class 1 modification. This is an appropriate classification because similar equipment [the Air Intake Shaft (**AIS**) hoist] already exists in the Permit. The upgrade simply provides additional emergency hoisting capability. The NMED has previously approved the addition of emergency equipment and respective inspections under this classification. See for example the Class 1 submitted to the NMED on February 13, 2015, subsequently approved on March 4, 2015.

This change may also be classified as “administrative and informational changes” pursuant to 20.4.1.900 NMAC (incorporating 40 CFR §270.42 Appendix I, A.1.) and is, therefore, a Class 1 modification. This is an administrative change for the following reasons; the Shaft #5 hoist and ancillary equipment are already in place and have performed this function during excavation of Shaft #5; this change does not remove or reduce any Permit requirements; this change simply adds the Shaft #5 hoist to the AIS entries already in Table D-2 and Table E-1; and because the

Class 3 PMR for excavation of Shaft #5 was previously adjudicated via a significant public participation process (i.e., the NMED already authorized excavation and use of Shaft #5 thereby authorizing the use of the ancillary mining equipment). Furthermore, the NMED has previously approved addition of emergency equipment and associated inspections as Class 1 administrative changes (see for example the Class 1 PMN submitted to the NMED on December 6, 2016, approved by the NMED on September 20, 2017; and the Class 1 PMN submitted on September 30, 2015 and subsequently approved by the NMED on January 27, 2016. In fact, most changes to add equipment, inspections and to modify equipment and inspection information in Table D-2 and E-1 have been via Class 1 “administrative changes.”

These classifications are compliant with the RCRA regulations and Environmental Protection Agency rulings. Pursuant to 40 CFR 270.42 (d)(2)(i) “These changes do not substantially alter the permit conditions or reduce the capacity of the facility to protect human health or the environment.” The EPA stated the following in the Federal Register / Vol. 53, No. 188 / Wednesday, September 28, 1988 / Rules and Regulations 37913 (emphasis added.)

B. Procedures for Class 1, 2, and 3 Modifications 1. *Class 1 Modifications* EPA is promulgating today's rule covering Class 1 modifications essentially as proposed. (See § 270.42(a).) Class 1 modifications cover changes that are necessary to correct minor errors in the permit, to upgrade plans and records maintained by the facility, or to make routine changes to the facility or its operation. They do not substantially alter the permit conditions or significantly affect the overall operation of the facility. Generally, these modifications include the correction of typographical errors; necessary updating of names, addresses, or phone numbers identified in the permit or its supporting documents; **upgrading, replacement, or relocation of emergency equipment; improvements of monitoring, inspection, recordkeeping, or reporting procedures; updating of sampling and analytical methods to conform with revised Agency guidance or regulations; updating of certain types of schedules identified in the permit; replacement of equipment with functionally equivalent equipment; and replacement of damaged ground-water monitoring wells.** The specific modifications that fall into Class 1 are enumerated in Appendix I to 40 CFR Part 270. This Appendix is discussed more fully in Section IV.C of this preamble.

This change also includes a minor change to Permit Attachment F, Table F-1 and is classified as “Changes in the training plan: b. other changes” pursuant to 20.4.1.900 NMAC (incorporating 40 CFR §270.42 Appendix I, B.5.b) and is, therefore, a Class 1 modification.

Discussion

This change is to utilize the existing Shaft #5 (Utility Shaft) hoist for emergency egress. This change will provide an additional level of safety for underground workers in the event of an emergency. The hoist was used during construction of Shaft #5 for hoisting muck, equipment, materials, personnel, and for emergency egress. There are an existing hoist and cage, available for emergency egress at Shaft #5 that has been in place since 2020. It provides additional emergency hoisting capability (additional to the AIS). Note that the Class 3 PMR, Excavation of a New Shaft and Associated Connecting Drifts was approved by the NMED on October 27, 2021. This change does not reduce or remove any Permit requirements. This change is needed to describe the existing emergency egress capability of the Shaft #5 hoist. The Shaft #5 hoist will only be used for emergency egress. This change is also needed to administratively turn existing mining equipment into emergency equipment by listing the equipment in the

Contingency Plan and adding it to the inspection regime. This change is being made to ensure there are two modes of egress whenever workers are underground. The change to Table F-1 is needed to ensure inspectors are appropriately trained to perform the applicable Permit-required inspection. The hoist will be deemed ready to operate in accordance with applicable MSHA requirements as described in Appendix A of this modification. Note that this hoist is anticipated to be brought online in early July 2026.

Revised Permit Text:

ATTACHMENT D
RCRA CONTINGENCY PLAN

Table D-2
Emergency Equipment Maintained at the Waste Isolation Pilot Plant

| Medical Resources | | |
|---------------------------|--|--|
| Ambulance | A minimum of one ambulance, maintained and equipped in accordance with the New Mexico Ambulance Standard, 18.3.14 NMAC, and as documented in WIPP facility files | Surface at Safety and Emergency Services Facility (Building 452, Vehicle Bay) |
| Medical Cart | A minimum of one medical cart, equipped to provide basic life support operations, as documented in WIPP facility files | Underground (Emergency Vehicle Parking/Charging Area at S550/E140) |
| Miners First Aid Stations | Equipped per 30 CFR 57.15001 | Underground (Salt Shaft Area, Waste Shaft Area, <u>Shaft #5 (Utility Shaft) Area</u> , E300 Maintenance Shop, and at S700/W170, S1300/W30, and S1600/E140) |

| General Plant Emergency Equipment | | |
|-----------------------------------|---|---|
| Equipment | Description and Capabilities | Location |
| Emergency Hoist | Hoist in Air Intake Shaft <u>and Shaft #5 (Utility Shaft)</u> | Air Intake Shaft (Building 361) <u>Shaft #5 (Utility Shaft) surface area</u> |

ATTACHMENT E

INSPECTION SCHEDULE, PROCESS AND FORMS

**Table E-1
Inspection Schedule/Procedures**

| System/Equipment Name | Responsible Organization | Inspection^a Frequency | Procedure Number and Inspection Criteria^h |
|--|---------------------------------|---|--|
| Air Intake Shaft <u>and Shaft #5 (Utility Shaft)</u> Hoist | Underground Operations | Preoperational ^c | WP 04-HO1004 HW Hoist Operations Log Inspecting for Deterioration ^b , Safety Equipment, Communication Systems, and Mechanical Operability ^m in accordance with Mine Safety and Health Administration (MSHA) requirements |

ATTACHMENT F

FACILITY PERSONNEL PERMIT TRAINING PROGRAM

Table F-1

TRU Mixed Waste Management and Emergency Response Job Titles and Descriptions

| JOB TITLE | POSITION DESCRIPTION |
|-----------|--|
| Inspector | <p>Responsible for routine inspection and maintenance (including repairing and replacement, as appropriate) of equipment instrumental in preventing, detecting, or responding to environmental or human health hazards, such as monitoring equipment, safety and emergency equipment, and operating or structural equipment. Inspections are performed at the facility to detect malfunctions, deterioration, operator errors, and discharges that may cause or lead to releases of TRU mixed waste or TRU mixed waste constituents to the environment or that could be a threat to human health. Depending on the Inspector's specific job position, job duties may involve one or more of the following:</p> <ul style="list-style-type: none"> • Performing functional and operational checks of waste handling equipment and support systems as well as conducting waste container storage inspections • Conducting routine inspections of emergency response equipment and vehicles, on site • Performing routine inspections of the hoisting equipment for the Air Intake Shaft, Salt Handling Shaft, <u>Shaft #5 (Utility Shaft)</u>, and Waste Shaft • Conducting routine inspections and testing of facility fire suppression and detection systems • Inspecting and testing of communication systems, site notification system, the public address system, and alarm systems for proper function • Performing routine inspections of the backup power supply diesel generators • Performing routine inspections of the eye wash and shower equipment • Performing routine inspections of the underground geomechanical instrumentation system • Performing routine inspections of the central uninterruptible power supply • Performing routine inspections of the fire water storage tank • Performing routine inspections of the ventilation exhaust fans |

Appendix A

The hoist will be deemed ready to operate in accordance with applicable MSHA requirements as follows:

- Escapeways
 - 30 CFR 57.11050, *Escapeways and refuges*
 - As described in Permit Attachment D, *RCRA Contingency Plan*, Section D-8b, *Underground Assembly Areas and Egress Hoist Stations*
- Inspection/examination
 - 30 CFR 57.19129, *Examinations and Tests at Beginning of Shift*
 - Permit Attachment E, Table E-1, *Inspection Schedule/Procedures* pursuant to 40 CFR 264.15, *General Inspection Requirements*
- Underground Escape Routes
 - 30 CFR 57.11051, *Escape Routes*
 - As described in Permit Attachment D, Section D-8d, *Plan for Underground Evacuation*
- Underground Escape and Evacuation Map
 - 30 CFR 57.11053, *Escape and Evacuation Plans*
 - As described in Permit Attachment D, Section D-8d
 - As shown in Permit Attachment D, Figure D-3, *Underground Escape and Evacuation Map*
- Nondestructive evaluation and/or visual inspection of wire ropes
 - 30 CFR 57.19023, *Examinations*
- Shaft inspection
 - 30 CFR 57.19133, *Shaft*
- Training for hoist operators
 - 30 CFR 57.19058, *Experienced Hoist Operators*
 - Inspector Position Description, Permit Attachment F, Table F-1, *TRU Mixed Waste Management and Emergency Response Job Titles and Descriptions*
- Content of Contingency Plan
 - 40 CFR 264.52
 - Permit Attachment D, Section D-6, *Emergency Equipment* and Table D-2 *Emergency Equipment Maintained at the Waste Isolation Pilot Plant*