



Department of Energy

Carlsbad Field Office
P. O. Box 3090
Carlsbad, New Mexico 88221

JAN 08 2021

Mr. Kevin Pierard, Chief
Hazardous Waste Bureau
New Mexico Environment Department
2905 Rodeo Park Drive East, Building 1
Santa Fe, New Mexico 87505

Subject: Response to the Information Request Regarding the Expiration of the Temporary Authorization for the Class 3 Permit Modification, Waste Isolation Pilot Plant Hazardous Waste Facility Permit Number: NM4890139088-TSDF

Reference: New Mexico Environment Department Correspondence from Kevin Pierard, Chief, Hazardous Waste Bureau, to Reinhard Knerr, Manager, and Sean Dunagan, Project Manager, Subject: Information Request Regarding Expiration of Temporary Authorization for Class 3 Permit Modification, Waste Isolation Pilot Plant, EPA I.D. Number NM4890139088, dated December 11, 2020

Dear Mr. Pierard:

Enclosed is the Permittees' response to the referenced information request.

We certify under penalty of law that this document and all attachments were prepared under our direction or supervision according to a system designed to assure that qualified personnel properly gather and evaluate the information submitted. Based on our inquiry of the person or persons who manage the system, or those persons directly responsible for gathering the information, the information submitted is, to the best of our knowledge and belief, true, accurate, and complete. We are aware that there are significant penalties for submitting false information, including the possibility of fine and imprisonment for knowing violations.

If you have any questions, please contact Mr. Michael R. Brown at (575) 706-0072.

Sincerely,

Signatures on File

Reinhard Knerr
Manager
Carlsbad Field Office

Sean Dunagan
President and Project Manager
Nuclear Waste Partnership LLC

Enclosures (2)

cc: w/enclosures
R. Maestas, NMED *ED
D. Biswell, NMED ED
M. McLean, NMED ED
CBFO M&RC
*ED denotes electronic distribution

Enclosure 1

Response to December 11, 2020 Information Request

Response to Information Request

1. *Provide details of the steps taken to shut down the Temporary Authorization activities by 11:59 pm on October 24, 2020, including any specific procedures or processes employed to accomplish this.*

Response: Evidence supporting the Permittees' compliance with the verbal direction received from NMED on October 23, 2020 is attached in Enclosure 2. The evidence consists of an e-mail from NWP procurement to the contractor, Harrison Western-Shaft Sinkers (HW-SS), with direction to initiate a work pause effective October 24, 2020 at midnight. The work pause was directed to HW-SS and addressed work within the confines of the shaft and footprint of the plenum. Above ground work was allowed to continue, per verbal direction from NMED and consistent with contingency plan Scenario 1. Additionally, the evidence includes the Daily Log of Construction from the NWP Capital Projects Project Site Technical Representative (PSTR) and HW-SS Work Logs for October 24, 2020 through October 26, 2020. There are no other specific procedures or processes that expressly address shut down of Temporary Authorization (TA) activities.

2. *The timeline given in the Contingency Plan Scenario 1, as referenced in your November 5, 2020 letter, is outdated. Provide details of the implementation of Contingency Plan Scenario 1 including updated date/time references.*

Response: The updated timeline for contingency plan Scenario 1 (Scenario 1) is shown in Table 1 below. The timeline includes key regulatory information/dates.

Table 1 - Anticipated Schedule and Activities for Contingency Plan Scenario 1

Work	Key Dates	Details/Status
The Permittees request a TA reissuance	September 9, 2020	Complete
The Permittees transmit letter with contingency plan scenarios to NMED	October 16, 2020	Complete
The Permittees receive instruction from NMED (Maestas) to stop work in the shaft on October 24, 2020 at midnight, pending a decision on the TA reissuance. Verbal instruction allowed surface work to continue.	October 23, 2020	This instruction was verbal. No written record providing further detail is available./Complete
The Permittees issue a work pause e-mail to HW-SS, effective October 24, 2020, 11:59 pm	October 23, 2020	See Enclosure 2 as referenced in response to Request 1./Complete

Work	Key Dates	Details/Status
HW-SS completes the liner pour to nominally 55 feet below ground surface	October 24, 2020 around 7:45 pm	See Enclosure 2 as referenced in response to Request 1./Complete
The TA expires	October 24, 2020, 11:59 pm	HW-SS crew out of shaft at 8:00 pm.
HW-SS proceeds with surface work at the shaft site consistent with Scenario 1 (i.e., wiring Galloway, assembling headframe parts)	October 25, 2020	This surface work was unaffected by the expiration of the TA./ In-progress
The Permittees verbally inform NMED of formal implementation of contingency plan Scenario 1 per the October 16, 2020 notification.	November 3, 2020	Complete
The Permittees send a follow-up letter to NMED regarding implementation of Scenario 1	November 5, 2020	Complete
Additional Scenario 1 work is performed, primarily preparing for the installation of the plenum	November 3-11, 2020	One aspect of Scenario 1 is to complete plenum and duct work installation for safety reasons. This installation was suspended due to a safety related Stop Work Order (see below)./Not Complete
Safety related Stop Work Order issued to HW-SS to ensure safe movement of plenum and other hoisting and rigging tasks.	November 11, 2020 – December 16, 2020	No work was allowed in the shaft during this time period since cranes must be used to access the work area. HW-SS was allowed to perform surface work that did not involve hoisting and rigging during this time period./Complete
NMED issues denial of TA reissuance	November 18, 2020	NMED instructed: “The Permittees must adhere to its ‘Contingency Plan Scenario 1: No Reissuance of Temporary Authorization’ until the Class 3 PMR process has concluded.”
The Permittees work on schedule updates and administrative/contractual documents consistent with Scenario 1	November 20, 2020	Administrative/contractual documents are related to retaining sufficient personnel and equipment for Scenario 1 completion, maintenance and

Work	Key Dates	Details/Status
		surface work. This work started on November 20, 2020 and is on-going. /In-progress
The Permittees lift (remove) the safety related Stop Work Order from HW-SS	December 16, 2020	Complete
Additional HW-SS personnel arrive in Carlsbad, NM	January 11-26, 2021	Travel to New Mexico; meet applicable COVID-19 requirements; retraining as needed
HW-SS performs Scenario 1 liner/plenum/duct work	January 27, 2021 – April 27, 2021	Once S#5 Scenario 1 work is complete, work within the footprint of the shaft will stop, excluding maintenance and surface work deemed necessary in accordance with Scenario 1 (see additional details below).
HW-SS performs Scenario 1 maintenance and surface work	Ongoing	Maintenance (e.g., water removal from bottom of shaft). Surface work will continue in accordance with Scenario 1. This work will continue until a decision is rendered on a modified Permit.

3. *Provide other details of the current and anticipated state of activity at the shaft site while the Class 3 process is on-going, including any surface activities, preventative maintenance, and inspections associated with the shaft project.*

Response: The current and anticipated state of activities are described below as well as in Table 1 above.

Current state of activity

1. Shaft

- a. The shaft was excavated to 116 feet below ground surface (bgs) on October 5, 2020. Subsequently, work to install the shaft liner was started.
- b. No additional excavation has occurred since October 5, 2020. No work has occurred within the interior of the shaft since November 11, 2020, due to the safety related Stop Work Order for hoisting and rigging activities. This Stop Work Order was lifted effective December 16, 2020.

- c. Liner/plenum/duct contingency plan Scenario 1 work will be continued pending retraining and meeting applicable COVID-19 requirements.

2. Surface

- a. Work during the October 25 – November 11, 2020 time frame involved assembly of the Galloway and headframe as the primary activities. Minor work was directed toward commissioning of winches and hoists. Other surface work included final assembly of two duct sections which included priming and painting of the sections. HW-SS received and performed limited pre-assembly of new components such as the jumbo drill and muckers that will potentially be used during the slow and main sink activities.
- b. Infrastructure installation (i.e., firewater loop, electric power) unrelated to shaft excavation is ongoing.

Anticipated activities

1. Completing field and construction activities for Scenario 1

- a. HW-SS was released to continue with hoisting and rigging activities on December 16, 2020. The current plan will include immediately establishing resources including equipment, materials and personnel, to complete construction activities for Scenario 1. At this time, the Permittees expect HW-SS to work with a single crew to complete this work scope. It is expected that they will work one single shift a day, compared to the previous plan of 24/7 operations, with crews rotating in and out of the service. This will include working five eight-hour or five ten-hour shifts per week to install the plenum, install the duct to the surface and to complete the shaft lining to the surface. When using a single crew, the Permittees estimate that this work will be completed prior to the end of April 2021. Without completing this work, the existing installation is in jeopardy of deterioration, rendering it unsafe for re-entry in the future without significant evaluation and possible rework.

2. Preventive maintenance

a. Shaft

- i. Once Scenario 1 work activities are complete, maintenance within the interior of the shaft will be limited to the video inspection of the shaft bottom on a weekly basis. Following the setting of a large platform over the shaft, inspections will be performed using approved lighting and video surveillance methods. Video inspections will be used to support the pumping of water (if any) that is found to exist at the bottom of the shaft. This work may include the construction of a small cavity (sump) that will allow HW-SS to use for the ease of collection of water and for pumping activities.

- b. Surface - Preventative measures for the surface components may include the following:
 - i. Testing of the winches and hoists monthly or on other set schedules as determined by HW-SS and the manufacturer. This may include quarterly testing or other testing of the motors and wire ropes (cables) that were installed on the systems. HW-SS will be required to inspect the cables on a quarterly basis (minimum planning case - full length inspection of ropes).
 - ii. Maintenance of the large hoists and winches will include the establishment of permanent power to each of the systems. These pieces of equipment cannot run on temporary power.
 - iii. Components installed on the Galloway will have to be maintained on a monthly basis.
 - iv. Supplies and critical one-of-a-kind pieces of equipment may be placed in approved storage containers or buildings. This includes specialized equipment such as the jumbo drill and the large muckers.
 - v. Other high-value pieces of equipment, supplies and hardware must be protected from the elements and will be inspected on a set schedule. Where required by HW-SS, or the vendor/manufacturer, these high-value components must be maintained for the long-term integrity of the project.

3. Inspections

- a. Shaft
 - i. Weekly video inspection of the shaft.
 - ii. Pump water from the shaft bottom if indicated by the weekly video inspection.
- b. Surface
 - i. Unspool winch and hoist cables every 90 days for inspection.

ENCLOSURE 2

Evidence related to work pause on October 24, 2020 at midnight

From: Riess, Mark - Edgewater
Sent: Wednesday, December 02, 2020 1:29 PM
To: Chavez, Rick - RES; Farnsworth, Jill - WRES
Subject: FW: PO511747 US #5 - Notification of Work Pause within the confines of the Shaft or foot-print of Plenum

Rick:

Per your request. Let me know if you need anything else.

Regards,

Mark
Office: (575) 234-8376
Cell: (509) 366-3841

From: Olivas, Roberto - Olivetek <Roberto.Olivas@wipp.ws>
Sent: Friday, October 23, 2020 4:40 PM
To: Tom Szynakiewicz <tszynakiewicz@harwest.com>; Chris Hassel <CHassel@harwest.com>
Cc: Smith, Steve - NWP <Steve.Smith@wipp.ws>; Riess, Mark - Edgewater <Mark.Riess@wipp.ws>; Bennett, Max - NWP <Max.Bennett@wipp.ws>; Gonzales, Marty - NWP <Marty.Gonzales@wipp.ws>; Bolling, David - Edgewater <David.Bolling@wipp.ws>; Cupp, Ceann - Good Fit <Ceann.Cupp@wipp.ws>
Subject: PO511747 US #5 - Notification of Work Pause within the confines of the Shaft or foot-print of Plenum

Clarification, the current TA expires tomorrow night, October 24th at **midnight**.

From: Olivas, Roberto - Olivetek
Sent: Friday, October 23, 2020 4:35 PM
To: Tom Szynakiewicz; Chris Hassel
Cc: Smith, Steve - NWP; Riess, Mark - Edgewater; Bennett, Max - NWP; Gonzales, Marty - NWP; Bolling, David - Edgewater; Riess, Mark - Edgewater; Cupp, Ceann - Good Fit
Subject: PO511747 US #5 - Notification of Work Pause within the confines of the Shaft or foot-print of Plenum

Harrison Western - Shaft Sinkers JV
Tom Szynakiewicz

HW-SS JV was just informed by Mr. Mark Riess-NWP US Project Manager that the current Temporary Authorization (TA) for the Utility Shaft expires October 24, 2020 at 12:00 pm. The follow-on or second TA is expected to be issued early next week, October 26 or 27, 2020.

Until the second TA is received, HW-SS JV is hereby notified of a Work Pause within the confines of the Shaft or within the foot-print of the Plenum. Work within these areas will resume upon receipt of the second TA. In addition, only above ground work is permitted until receipt of the second TA.

For technical questions regarding this matter, please contact Mark Riess at (509) 366-3841.

Your confirmation of receipt is requested.

Sincerely,

Roberto Olivas
Staff Procurement Specialist
Nuclear Waste Partnership, LLC (NWP)
Contractor to the U.S. Department of Energy WIPP Waste Isolation Pilot Plant
mobile 346-775-1857

DAILY LOG OF CONSTRUCTION

Su M T W Th F Sa

PROJECT:
Shaft 5 Construction

CONTRACT NO. 511747 DATE 10/24/20 *Day shift*

LOCATION
Shaft 5 Work Site

CONTRACTOR
HWSS

PSTR ON JOB
Original on File

WEATHER (Rain, Snow, Cloudy, Windy, etc.)
Clear / Cool

TEMP. High Low
70 41

GROUND CONDITIONS (Dry, Damp, Wet, Frozen)
Dry

NO. CONTRACTOR'S MEN BY JOB CATEGORIES

Various Trades	- 24
Super	- 1
Safety Rep	- 1
Office Support	- 3

NO. SUBCONTRACTOR'S MEN BY JOB CATEGORIES

Pettigrew	- 2
Mark Crane	- 6 (3op & 3 Rig)

EQUIPMENT ON JOB

Brief description of size	No. Units	Working	
		Yes	No
40 Ton Crane	1	Part Time	
110 Ton Crane	1	✓	
160 " "	1	✓	
550 " "	1	✓	
Telehandler	1	✓	
Man Lift	1	✓	
Skid Steer	1	✓	
Water Truck	1	✓	
Pumper Truck	1	✓	
Concrete Truck	?	✓	
Front End Loader	1	✓	

MATERIALS DELIVERED
Concrete

OFFICIAL VISITORS TO JOB SITE

STATUS OF WORK

ITEM No. Brief description of work in progress, questionable performance, etc. Include tests made and samples taken
(Use comments section on reverse for other information, if necessary)

**Rework of Re-bar for concrete liner
Head frame assembly & casting
Place concrete including testing**

SIGNATURE *[Signature]*

NAME

Original on File

Original on File

DAILY LOG OF CONSTRUCTION

Su M T W Th F **Sa**

PROJECT:

Shaft 5 Construction

LOCATION

Shaft 5 Work Site

CONTRACT NO.

511747

DATE

10/24/2020 Nights.

CONTRACTOR

HWSS

PSTR ON JOB

Original on File

WEATHER (Rain, Snow, Cloudy, Windy, etc.)

Clear, cold

TEMP.

High Low

70 45

GROUND CONDITIONS (Dry, Damp, Wet, Frozen)

Dry

NO. CONTRACTOR'S MEN BY JOB CATEGORIES

NO. SUBCONTRACTOR'S MEN BY JOB CATEGORIES

HWSS / TOS - 20

Pettigrew - 2

Safety - 1

Martins Crane - 6

Superintendent - 1

Office support (engineering) - 1

EQUIPMENT ON JOB
Brief description of size

No. Units

Working
Yes No

MATERIALS DELIVERED

40 Ton crane

1

✓

- Concrete (50 cyd)

110 Ton crane

1

✓

160 Ton crane

1

✓

550 Ton crane

1

✓

Telehandler

1

✓

Man Lift

1

✓

Skid steer

1

✓

OFFICIAL VISITORS TO JOB SITE

water truck

1

✓

concrete pump truck

1

✓

front end loader

1

✓

concrete delivery truck

5

✓

STATUS OF WORK

ITEM Brief description of work in progress, questionable performance, etc. Include tests made and samples taken.

No. (Use comments section on reverse for other information, if necessary)

- Finish pouring concrete in shaft, one (1) test @ 6:30 pm.

- Headframe assembly

- Backfill conduit trench North yard.

- Move Gantry to shop.

- Strip forms tensioner pad.

SIGNATURE

Original on File

NAME

Original on File

TIMELINE

Date: 10/24/00

Time	Work Performed - Notes
1800	- Project Safety tailboard, discuss concrete burns, slips/trips/falls. Discuss scope of work for shift.
1805	- Shaft crew "Hot Change" on bottom to continue pouring concrete liner.
	- Assembly of headframe steel
1830	- Concrete test from pump truck.
1945	- Finish pouring concrete (5 trucks)
	- Gear out from pour, crew out of shaft @ 2000
2000	- Continue headframe assembly - Housekeeping.
	- Move Gantry to shop for additional welding
	- Strip forms tensioner pad.
	- Backfill conduit trench North yard.
0030	- Shaft crew left for evening. - Continue headframe assembly.
0600	

DAILY LOG OF CONSTRUCTION

Su M T W Th F Sa

PROJECT:

Shaft 5 Construction

LOCATION

Shaft 5 Work Site

CONTRACT NO.

511747

DATE

10/25/20 *Day Shift*

CONTRACTOR

HWSS

PSTR ON JOB

Original on File

WEATHER (Rain, Snow, Cloudy, Windy, etc.)

Clear - Mild

TEMP.

High	Low
75	51

GROUND CONDITIONS (Dry, Damp, Wet, Frozen)

DRY

NO. CONTRACTOR'S MEN BY JOB CATEGORIES

Various Trades - 10

NO. SUBCONTRACTOR'S MEN BY JOB CATEGORIES

0 - Subs

*Super - 1
Safety Rep - 1
Office Support - 1*

*Down to only 6
after 1:00 pm*

EQUIPMENT ON JOB

Brief description of size

No. Units

Working

Yes

No

MATERIALS DELIVERED

40 Ton Crane

1

X

N/A

110 Ton Crane

1

X

160 " "

1

X

550 " "

1

X

Telehandler

1

X

Man Lift

2

X

Skid Steer

1

X

OFFICIAL VISITORS TO JOB SITE

Water Truck

1

X

N/A

Front End Loader

1

X

STATUS OF WORK

ITEM Brief description of work in progress, questionable performance, etc. Include tests made and samples taken

No. (Use comments section on reverse for other information, if necessary)

*Touch up work on Paint (Plenum)
General Site Clean-up
Equipment Maint.
Running Cable Tray*

SIGN

Original on File

NAME

Original on File

TIMELINE

Date:

Time	Work Performed - Notes
6:00 am	Safety Meeting
6:30 am 1:00 pm	General Site Main. Work
1:00-6:00pm	Small crew working on installing cable tray
	Most of workers left after lunch due to limited activities associated w/ ZUR JA issue.

TIMELINE

Date: 10/25/2020

Time	Work Performed - Notes
1800	NO site work due to T.A.
↓	
0600	

DAILY LOG OF CONSTRUCTION

Su **(M)** T W Th F Sa

PROJECT:
Shaft 5 Construction

LOCATION
Shaft 5 Work Site

CONTRACT NO. 511747 DATE 10/26/20

CONTRACTOR
HWSS

PSTR ON JOB
Original on File

WEATHER (Rain, Snow, Cloudy, Windy, etc.)
Cloudy / Slightly Windy

TEMP.
High 46 Low 27

GROUND CONDITIONS (Dry, Damp, Wet, Frozen)
Dry

NO. CONTRACTOR'S MEN BY JOB CATEGORIES

Superintendent - 1 PM - 1
Safety Manager - 1
Field Engineer - 2
Foremen/Shifters - 2
Miners/Steel Workers - 7 / 22
Electricians - 4
Mechanics - 2
Consultant - 1
SS Engineers - 2 **Total : 56 59**

NO. SUBCONTRACTOR'S MEN BY JOB CATEGORIES

Marks Crane - 8 (4 Riggers, 4 Operators)
Built Concrete - 6

EQUIPMENT ON JOB Brief description of size	No. Units	Working	
		Yes	No
40 Ton Crane	1	/	
110 Ton Crane	1	/	
160 Ton Crane	1	/	
550 Ton Crane	1	/	
Telehandler	2	/	
Manlift	2	/	
Skid Steer 2890	1	/	
Water Truck	1	/	

MATERIALS DELIVERED

OFFICIAL VISITORS TO JOB SITE

STATUS OF WORK

ITEM No. Brief description of work in progress, questionable performance, etc. Include tests made and samples taken.
(Use comments section on reverse for other information, if necessary)

HWSS shaft construction paused due to pending TA (ongoing) - Head frame Assembly and galloway assembly continued. Tanker onsite to remove contents from onsite frac tank.

SIGNATURE

NAME

TIMELINE

Date: 10/26/20

Time	Work Performed - Notes
06:00	<p>Morning Safety Meeting: Discussed general personnel safety items of interest, related to site activities. Reiterated the importance of maintaining seriousness & diligence w/ COVID 19 safety protocol.</p>
	<ul style="list-style-type: none"> - If any symptoms are experienced, vocalize w/ management and take proper steps to identify who has been in contact w/ individual (tracing) and make sure quarantine & testing are in order.
06:30	<ul style="list-style-type: none"> - Shaft/Plenum Area work paused due to pending TA. - Headframe Assembly crew discussed plan of action moving forward w/ assembly, also discussed plan of action for gateway work.
	<ul style="list-style-type: none"> o Personnel will do^{do} a work area walk thru, identifying hazards and tending to identified issues
11:30	<ul style="list-style-type: none"> o Communication needs to continue as anti past (good practice) - Tanker onsite to empty onsite frac tank containing water collected in shaft; Temp recorded and escorted by HWS to designated area
	<p>Electricians powered up E-house (Concerns)</p> <ul style="list-style-type: none"> - Told to lock out - Tag Out unused breakers - Fire Extinguisher in E-house not up to date
	<ul style="list-style-type: none"> - Storage needs to be displayed on door of E-house (Authorized Personnel Only)
	<ul style="list-style-type: none"> - Head frame assembly continued on SE end of site. - Head frame platform staged south of sinking collar and assembly of components initiated
	<p>Built concrete personnel onsite and removed slag from Seg. #2 Plenum components - Exitted site upon completion ~ 12:00 pm</p>
	<p>* Miners exitted site by 10:30 AM due to shaft work paused due to pending TA.</p>
	<p>* Temperatures were colder than average previous dates; personnel adjusting to cold weather.</p>

DAILY LOG OF CONSTRUCTION

Su M T W Th F Sa

PROJECT:
Shaft 5 Construction

LOCATION: **Shaft 5 Work Site**

CONTRACT NO. 511747 DATE 10/26/2020 - Nights

CONTRACTOR: **HWSS**

PSTR ON JOB: **Original on File**

WEATHER (Rain, Snow, Cloudy, Windy, etc.) <i>* cloudy, windy. * Winter storm warning</i>	TEMP.		GROUND CONDITIONS (Dry, Damp, Wet, Frozen) <i>Dry</i>
	High	Low	
	<i>46</i>	<i>25</i>	

NO. CONTRACTOR'S MEN BY JOB CATEGORIES	NO. SUBCONTRACTOR'S MEN BY JOB CATEGORIES
<i>Superintendent - 1</i>	<i>Mark's crane - 2 riggers / 2 operators</i>
<i>safety - 1</i>	
<i>Engineering - 1</i>	
<i>HWSS - 7</i>	
<i>TOS - 9</i>	

EQUIPMENT ON JOB Brief description of size	No. Units	Working		MATERIALS DELIVERED
		Yes	No	
<i>40 Ton crane</i>	<i>1</i>	<i>✓</i>		<i>N/A</i>
<i>110 Ton crane</i>	<i>1</i>	<i>✓</i>		
<i>160 Ton crane</i>	<i>1</i>	<i>✗</i>	<i>✓</i>	
<i>550 Ton crane</i>	<i>1</i>		<i>✓</i>	
<i>Telehandler</i>	<i>2</i>		<i>✓</i>	
<i>Man lift</i>	<i>2</i>	<i>✓</i>		

EQUIPMENT ON JOB Brief description of size	No. Units	Working Yes	Working No	OFFICIAL VISITORS TO JOB SITE
<i>Ski steer</i>	<i>1</i>		<i>✓</i>	
<i>Water Truck</i>	<i>1</i>		<i>✓</i>	<i>N/A</i>

STATUS OF WORK

ITEM No. Brief description of work in progress, questionable performance, etc. Include tests made and samples taken. (Use comments section on reverse for other information, if necessary)

- No shaft activity due to T.A.*
- Continue with head frame assembly.*
- Insulate conex's. Crew left @ 12:00.*

SIGNATURE: **Original on File** NAME: **Original on File**

TIMELINE

Date: 10/26/2020

Time	Work Performed - Notes
1800	Safety Tailboard. Discussed working in cold climate, importance of hydration, wind speed while conducting crane activities. Discussed scope of work - continue headframe steel assembly.
1830	- continue headframe steel assembly - Insulate Conex's.
↓	
↓ 0001	- crew left for evening.

Date Sat 10/24/2020

Job # 2019-217

Prepared By Rick Deel

Weather

6:00 AM

37° 

Clear

Wind: 6 MPH | Precipitation: .0" | Humidity: 87%

12:00 PM

57° 

Clear

Wind: 13 MPH | Precipitation: .0" | Humidity: 46%


11:00 PM

59° 

Mostly Cloudy

Wind: 8 MPH | Precipitation: .0" | Humidity: 56%

Work Logs

Name	Description	Quantity	Hours	Hours To Date
Albert Draine	<p>Shaft</p> <p>Days made adjustments on the rebar in the shaft so we pass QAQC. Added foam expansion ring , greased inserts on the previous pour. lowered water stop down and poured concrete.</p> <p>Nights hot changed the day crew out to keep the pour going.</p> <p>back filled the trench going to main power center.</p> <p>Moved gantry over by the shop to be worked on, also moving all the rebar and hanging rods closer to shaft for the next lift of rebar.</p> <p>Surface ops</p> <p>WIPP – Daily Report – Headframe:</p> <p>1.Headframe – Module 01, 02, 03, 04, 05, collar & Staircase – repair work / due for inspection:</p> <p>a.No reports received for dayshift & nightshift...</p> <p>b.Module 01 - Prepare and lift Gridline 02 on top of Gridline 01 (Install temporary braces, bolt members & braces on gridline 01 to gridline 02)</p> <p>c.Four Column splices outstanding between Module 03 and Module 04 on Grid line 01 & Grid line 02 – busy with SK34 – 24 holes drilled in bottom splice plate & 24 holes drilled in the two flange splice plates – in progress & withdrawn all people during the lift of Module 01 gridline 02 (B&B)</p> <p>d.Sort and started to install and tag weld decking in the Middle- & Top stair towers</p> <p>2.Headframe – Module 01 Grid lines 01, 02 & 03 – welding inspection to be done:</p> <p>a.Gridline 01 – welding inspection to follow on the two lifting lugs.</p>	0 	0	156

3.The main-sink galloway

- a.(Modifications required on the third and fourth decks – require access platforms on the same decks...drawings were issued and were send out on tender for fabrication...consider using guralium or the equivalent)
- b.Run cables and junction boxes, robot lights installed on each compartment on each deck
- c.Busy installing pneumatic hoses to pneumatic cylinders
- d.Installed four pneumatic panels
- e.Busy modifying four hinge brackets for the eight Jumbo seating cylinder positions (95% complete) & arranged delivery of the pins on all the jumbo seating cylinders
- f.Received Mets drawings to modify for the Galloway Jibs to accommodate the pneumatic air hoists

4.The Clam (Mucker) Winches, Galloway Winches & MRH –

- a.The shim plates measured up & the fabrication are completed.
- b.Installation of shim plates in progress & final alignment required.
- c.The non-shrink grout was delivered and to follow
- d.All power cable conduits installed to the four Galloway Winches & start to pull in wires

5.The MCH -

- a.The Drive assembly & drum assembly was placed over the anchor bolts on shim plates & final levelling started with a pre-measured gap of one inch between the drums shaft end and the drive assembly shaft end. (It should be 12mm less – in discussion with Timberland to resolve)
- b.The MCH – Operator Connex – lift & install the support columns – completed the sealer layer over the wood inside the connex.



6.The MCH – E-House modifications on the last staircase completed & both staircases to be painted

Albert Draine | 10/26/20 | 11:01PM

	Cale Moore		0		0	943.5
	Gary Witt		0		0	167
	Jamie Cameron	Safety meeting topics were Make sure the first aid kit is ready and available for the concrete pumping today. Is cold this morning, try to stretch before lifting, get help with heavy or awkward loads.	1		13	802
		Jamie Cameron 10/24/20 03:28PM				
	Kellen Flanders		0		0	470
	MICHAEL CALLAHAN	Talked about the need for off the social distancing and wearing face covering in public. This precaution	1		13	965

possibly will help on the job problems.

Mike Callahan | 10/24/20 | 04:29AM

 Tim Fishel	Built Concrete started recoating a small area on the plenum Blockout. Adjusted the rebar in the shaft. Placed 64 CY of concrete for the shaft liner. 55-70 ft. Tim Fishel 10/25/20 08:58AM	1		13.5	1427
Total		3		39.5	9425.52

Time Cards

Worker				Day Total	Hours To Date	Cost Code
Jamie Cameron PAYROLL ATTACHMENTS:	RT	OT	DT	13	802	
	13	0	0			
<hr/>						
MICHAEL CALLAHAN Other PAYROLL ATTACHMENTS:	RT	OT	DT	13	954	
	13	0	0			
<hr/>						
Tim Fishel Project Engineer PAYROLL ATTACHMENTS:	RT	OT	DT	13.5	1006	
	13.5	0	0			
<hr/>						
Total				39.5	7619.02	

Work Log Photos

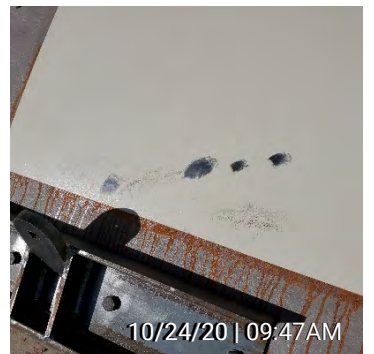
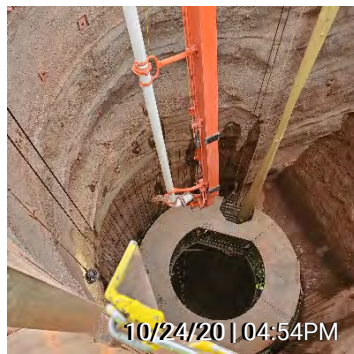
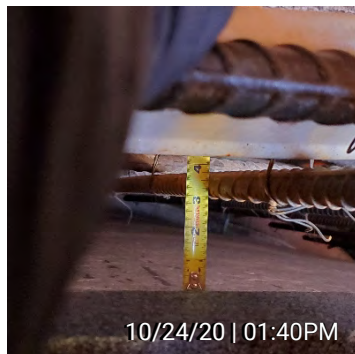
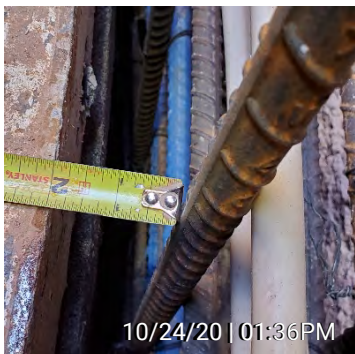
Jamie Cameron: | QTY: 1 | HRS: 13.0 | HTD: 802.0 ↶

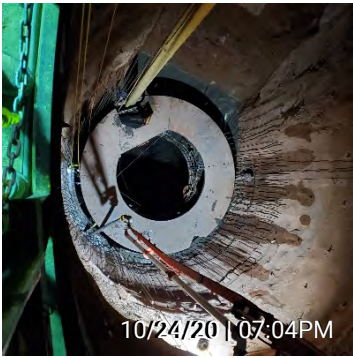
Attachments:  [10-24-2020 S...](#)

MICHAEL CALLAHAN: | QTY: 1 | HRS: 13.0 | HTD: 965.0 ↶

Attachments:  [BRW402343675...](#) |  [BRW402343675...](#) |  [BRW402343675...](#)

Tim Fishel: | QTY: 1 | HRS: 13.5 | HTD: 1427.0 ↶





General Notes

1. 64 CY Placed Shaft Liner 70.22-55.55 ft

Tim Fishel | 10/25/20 | 09:14AM

Attachments:  [10.24.20 Sha...](#)

Site Safety Observations

No entry

Quality Control Observations

No entry

Survey

Questions	N/A	No	Yes	Description
1. Any accidents on site today?	<input type="checkbox"/>	<input checked="" type="checkbox"/>	<input type="checkbox"/>	
2. Any schedule delays occur?	<input type="checkbox"/>	<input type="checkbox"/>	<input checked="" type="checkbox"/>	Temporary shaft permit at 12 am we had to stop work in the shaft Albert Draine 10/26/20 09:40PM
3. Did weather cause any delays?	<input type="checkbox"/>	<input checked="" type="checkbox"/>	<input type="checkbox"/>	
4. Any visitors on site?	<input type="checkbox"/>	<input checked="" type="checkbox"/>	<input type="checkbox"/>	
5. Any areas that can't be worked on?	<input type="checkbox"/>	<input type="checkbox"/>	<input checked="" type="checkbox"/>	Shaft at 12 am due to permit Albert Draine 10/26/20 09:41PM
6. Any equipment rented on site?	<input type="checkbox"/>	<input type="checkbox"/>	<input checked="" type="checkbox"/>	10 light plants, 1 compactor, 1 forklift, 4 manlifts. Rick Deel 10/26/20 09:05AM

Original on File

I, Rick Deel, have reviewed and completed this report.

Rick Deel | 10/26/20 | 09:05AM

Date Sun 10/25/2020

Job # 2019-217

Prepared By Rick Deel

Weather

6:00 AM

53° 

Partly Cloudy

Wind: 5 MPH | Precipitation: .0" | Humidity: 67%

12:00 PM

82° 

Partly Cloudy

Wind: 15 MPH | Precipitation: .0" | Humidity: 19%












11:00 PM

55° 

Mostly Cloudy

Wind: 17 MPH | Precipitation: .0" | Humidity: 52%

Work Logs

Name	Description	Quantity	Hours	Hours To Date
Albert Draine	Shaft crew Days backfill and compact around tensioning pad, helped electricians with cable trays and electrical box on the Galloway pad. night one guy left on site to patrol and maintain our site surface ops not scheduled to work <small>Albert Draine 10/26/20 11:05PM</small>	0 	0	156
Cale Moore		0 	0	943.5
Gary Witt	Mount panels and run wires for MCH hoist. <small>Gary Witt 10/26/20 09:44AM</small>	0 	0	167
 Jamie Cameron	Safety meeting topics discussed were Covid specific symptoms and the ever changing weather conditions. <small>Jamie Cameron 10/25/20 12:07PM</small>	0 	0	802
Kellen Flanders		0 	0	470
 MICHAEL CALLAHAN	PPE for Cement, Vibrating Cement careful of power cord placement, shaft inspection work deck look good no house keeping issues work in progress after pour. Going over plumb bob winches with crew and Rick <small>Mike Callahan 10/25/20 02:10AM</small>	1 	13	978
Rick Deel	Working on galloway and electrical on the hoist pad. <small>Rick Deel 10/26/20 09:07AM</small>	1 	10	1054.52
 Tim Fishel	Built Concrete finished painting the repair areas on the plenum blackout. <small>Tim Fishel 10/26/20 10:59AM</small>	1 	8	1435
Total		3	31	9456.52

Time Cards






Worker				Day Total	Hours To Date	Cost Code
MICHAEL CALLAHAN Other PAYROLL ATTACHMENTS:	RT 13	OT 0	DT 0	13	967	
Rick Deel Superintendent PAYROLL ATTACHMENTS:	RT 10	OT 0	DT 0	10	1054.52	
Tim Fishel Project Engineer PAYROLL ATTACHMENTS:	RT 8	OT 0	DT 0	8	1014	
Total				31	7650.02	

Work Log Photos

Jamie Cameron: | QTY: 0 | HRS: 0.0 | HTD: 802.0 ↶

Attachments:  [10-25-2020 S...](#)

MICHAEL CALLAHAN: | QTY: 1 | HRS: 13.0 | HTD: 978.0 ↶

Attachments:  [BRW402343675...](#) |  [BRW402343675...](#) |  [BRW402343675...](#) |  [BRW402343675...](#) |  [BRW402343675...](#)

Tim Fishel: | QTY: 1 | HRS: 8.0 | HTD: 1435.0 ↶



General Notes No entry

Site Safety Observations No entry

Quality Control Observations No entry

Survey

Questions	N/A	No	Yes	Description
1. Any accidents on site today?	<input type="checkbox"/>	<input checked="" type="checkbox"/>	<input type="checkbox"/>	
2. Any schedule delays occur?	<input type="checkbox"/>	<input type="checkbox"/>	<input checked="" type="checkbox"/>	Permit expired for working in the shaft, so no work in shaft for dayshift and nightshift Rick Deel 10/26/20 09:08AM
3. Did weather cause any delays?	<input type="checkbox"/>	<input checked="" type="checkbox"/>	<input type="checkbox"/>	
4. Any visitors on site?	<input type="checkbox"/>	<input checked="" type="checkbox"/>	<input type="checkbox"/>	
5. Any areas that can't be worked on?	<input type="checkbox"/>	<input checked="" type="checkbox"/>	<input type="checkbox"/>	
6. Any equipment rented on site?	<input type="checkbox"/>	<input type="checkbox"/>	<input checked="" type="checkbox"/>	10 light plants, 1 compactor, 1 forklift, 4 manlifts, 85G excavator Rick Deel 10/26/20 09:09AM

Original on File

I, Rick Deel, have reviewed and completed this report.

Rick Deel | 10/26/20 | 09:09AM

Date Mon 10/26/2020

Job # 2019-217

Prepared By Rick Deel

Weather

6:00 AM

38° 

Mostly Cloudy

Wind: 13 MPH | Precipitation: .01" | Humidity: 73%

12:00 PM

36° 

Overcast

Wind: 11 MPH | Precipitation: .02" | Humidity: 71%


11:00 PM

30° 

Overcast

Wind: 12 MPH | Precipitation: .03" | Humidity: 77%

Work Logs

Name	Description	Quantity	Hours	Hours To Date
Albert Draine	<p>Shaft crew Days went home Nights cleaned up around the tensioner pad . moved the 4 resistors onto Galloway pad. Finished Conex framing , moved some of the laydown stuff away from the collar. installed pipe for Galloway and double drum pads . Surface ops 1.Headframe – Module 01, 02, 03, 04, 05, collar & Staircase – repair work / due for inspection:</p> <p>a.Module 01 - Prepare and lift Gridline 03 on top of Gridline 02 (Install temporary braces, bolt members & braces on gridline 02 to gridline 03) b.Four Column splices outstanding between Module 03 and Module 04 on Grid line 01 & Grid line 02 – busy with SK34 – 24 holes drilled in bottom splice plate & 24 holes drilled in the two flange splice plates – in progress & withdrawn all people during the lift of Module 01 gridline 02 (B&B) c.Transfer with the 500T crane the staircase tiers close to the collar d.Transfer with the 500T crane the collar structure between the plinths next to the collar</p> <p>2.Headframe – Module 01 Grid lines 01, 02 & 03 – welding inspection to be done:</p> <p>a.Gridline 01 – welding inspection to follow on the two lifting lugs.</p> <p>3.The main-sink Galloway</p> <p>a.(Modifications required on the third and fourth decks</p>	0 	0	156

- require access platforms on the same decks...drawings were issued and were send out on tender for fabrication...consider using guralium or the equivalent)
- b.Run cables and junction boxes, robot lights installed on each compartment on each deck
- c.Busy installing pneumatic hoses to pneumatic cylinders
- d.Busy modifying four hinge brackets for the eight Jumbo seating cylinder positions (95% complete) & arranged delivery of the pins on all the jumbo seating cylinders
- e.Received Mets drawings to modify for the Galloway Jibs to accommodate the pneumatic air hoists & prepared all the plate work for the modification on the six jibs

4.The Clam (Mucker) Winches, Galloway Winches & MRH -

- a.The shim plates measured up & the fabrication are completed.
- b.Installation of shim plates in progress & final alignment required.
- c.The non-shrink grout was delivered and to follow
- d.All power cable conduits installed to the four Galloway Winches & start to pull in wires

5.The MCH -

- a.The Drive assembly & drum assembly was placed over the anchor bolts on shim plates & final levelling started with a pre-measured gap of one inch between the drums shaft end and the drive assembly shaft end. (It should be 12mm less - in discussion with Timberland to resolve)
- b.The MCH - Operator Connex - installed (yesterday) the operator chair, the SSWI Panel (modification required to re-locate the panel & have a remote HMI assembly.
- c.The MCH - Operator Connex - installed (yesterday) the Galloway Control panel and the SSGW Panel
- d.Installed (yesterday) the MV cable to the Aux Transformer & from the transformer back to the E-House
- e.Installed (yesterday) The Generator LV feed cable to the E-House
- f.Installed control cables between the transformer and the E-House
- g.Run the standby Generator and power the E-House

6.The MCH - E-House modifications on the last staircase completed & both staircases to be painted

Albert Draine | 10/26/20 | 11:19PM

Bart Zyskowski

Mounted Grid 1, 2, 3 first section to splice. Moved collar steel closer to shaft. Moved staircases away from headframe to make more room for welding activities. Repaired holes in section 1,2,3. Finished initial weld of grating on section 1 of staircase. Finished off with

1



12

12

housekeeping.

Bart Zyskowski | 10/26/20 | 06:00PM

Cale Moore	Observed fitup of R21-A and R23-A. R23-A nearly ready for final welding, needs to be tightened in one spot. <small>Cale Moore 10/26/20 05:04PM</small>	1		8	951.5
Gary Witt	Work on Galloway changes and mount electrical Panels in Hoist building <small>Gary Witt 10/26/20 09:45AM</small>	0		0	167
Kellen Flanders		0		0	470
MICHAEL CALLAHAN	Hydration important during cold weather, Iron and Tools know your limits if hands get cold, Warmup as needed, Take Your Breath use the dry and warmup <small>Mike Callahan 10/26/20 09:33PM</small>	1		13	991
Terry Jones	SWPs <small>Terry Jones 10/28/20 10:19AM</small>	1		12	509.5
Terry Jones	TOOL BOX - do not let the environment change your focus <small>Terry Jones 10/26/20 02:14PM</small>	1		12	
Tim Fishel	Built Concrete started preparing the surface of the 1st duct section of the plenum. <small>Tim Fishel 10/26/20 02:28PM</small>	1		8	1443
Wyatt Lovingier	Night: Continued day shift work of securing headframe grid 3 mod 1 to grid 2 mod 1. Supports welded in and stringers reinstalled. Headframe laydown reorganized, bolts, shims, and fish plates sorted. <small>Wyatt Lovingier 10/27/20 04:20AM</small>	1		6	66
Total		7		71	9527.52

Time Cards

Worker Day Total Hours To Date Cost Code

Bart Zyskowski <small>Field Engineer PAYROLL ATTACHMENTS:</small>	RT 12	OT 0	DT 0	12	12
---	----------	---------	---------	-----------	-----------

Cale Moore <small>PAYROLL ATTACHMENTS:</small>	RT 8	OT 0	DT 0	8	546
--	---------	---------	---------	----------	------------

MICHAEL CALLAHAN <small>Other PAYROLL ATTACHMENTS:</small>	RT 13	OT 0	DT 0	13	980
--	----------	---------	---------	-----------	------------

Terry Jones <small>Other</small>	RT 12	OT 0	DT 0	12	509.5
--	----------	---------	---------	-----------	--------------

PAYROLL ATTACHMENTS:

Terry Jones Other PAYROLL ATTACHMENTS:	RT 12	OT 0	DT 0	12	509.5
---	----------	---------	---------	-----------	--------------

Tim Fishel Project Engineer PAYROLL ATTACHMENTS:	RT 8	OT 0	DT 0	8	1022
---	---------	---------	---------	----------	-------------

Wyatt Lovingier Field Engineer PAYROLL ATTACHMENTS:	RT 6	OT 0	DT 0	6	66
--	---------	---------	---------	----------	-----------

Total				71	7721.02
--------------	--	--	--	-----------	----------------

Work Log Photos

MICHAEL CALLAHAN: | QTY: 1 | HRS: 13.0 | HTD: 991.0 ↶

Attachments:  [BRW402343675...](#)

Terry Jones: | QTY: 1 | HRS: 12.0 | HTD: 509.5 ↶

Attachments:  [SWPs 10-26-2020](#)

Terry Jones: | QTY: 1 | HRS: 12.0 | HTD: 509.5 ↶

Attachments:  [TOOL BOX 10-...](#)

General Notes

No entry

Site Safety Observations

No entry

Quality Control Observations

No entry

Survey

Questions	N/A	No	Yes	Description
1. Any accidents on site today?	<input type="checkbox"/>	<input checked="" type="checkbox"/>	<input type="checkbox"/>	
2. Any schedule delays occur?	<input type="checkbox"/>	<input type="checkbox"/>	<input checked="" type="checkbox"/>	NWP State Permit expired- awaiting renewed permit. No work in or around shaft or plenum excavation. Joey Vaupel 10/27/20 01:42PM

3. Did weather cause any delays?

Cold - windy at times

Joey Vaupel | 10/27/20 | 01:44PM

4. Any visitors on site?

5. Any areas that can't be worked on?

In or around the shaft or plenum excavation

Joey Vaupel | 10/27/20 | 01:43PM

6. Any equipment rented on site?

Manlift from United - long reach mobilized into site

Joey Vaupel | 11/02/20 | 06:36AM

Original on File

I, Rick Deel, have reviewed and completed this report.

Rick Deel | 10/29/20 | 07:37PM