



U.S. DEPARTMENT OF
ENERGY

OFFICE OF
**ENVIRONMENTAL
MANAGEMENT**

WIPP Community Forum

Ken Princen

DOE Carlsbad Field Office

Assistant Manager

Office of National TRU Program

Waste Certification and Disposal

Ryan Flynn

Salado Isolation Mining Contractors

Manager

Environmental, Safety & Health

October 3, 2023

The WIPP Team



U.S. Department of Energy Carlsbad Field Office

- Leads the Transuranic Waste Program
- Science Program



Salado Isolation Mining Contractors LLC

- Manages and operates the WIPP facility
- Manages transportation logistics and packages
- Manages waste retrieval, characterization and certification
- Mobile loading



Los Alamos National Laboratory

- Scientific advisor for waste characterization



Sandia National Laboratories

- Scientific advisor for repository recertification



CBFO Technical Assistance Contractor

- Technical and Quality Assurance support for the Carlsbad Field Office



Aleut Aerospace Engineering, LLC- TRANSCOM

- Satellite Tracking



Specialty Transportation, Inc.

CAST Specialty Transportation

- Transportation carrier

Waste Isolation Pilot Plant Mission



Our mission is to provide safe and compliant characterization, transportation, and disposal of the United States' defense transuranic (TRU) waste while protecting workers, the public, and the environment

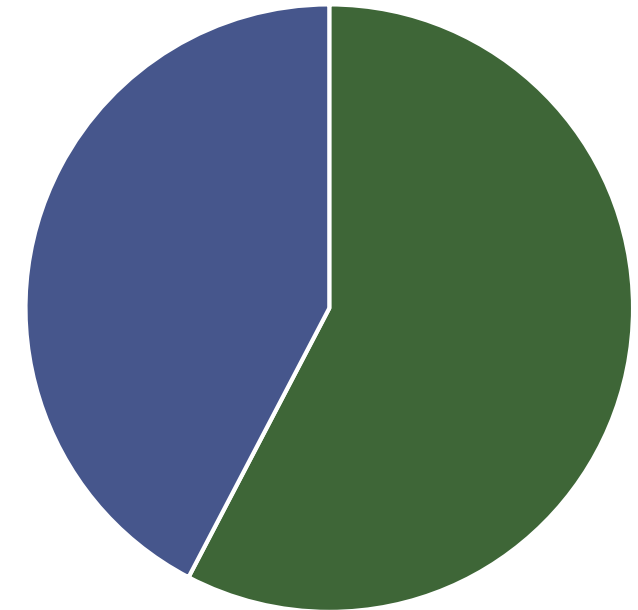


Guidelines for WIPP Disposal

- WIPP Land Withdrawal Act (LWA)
- Defense generated transuranic
- Must meet WIPP Waste Acceptance Criteria
- WIPP Transuranic Waste Capacity 6.2M Ft³
 - Current volume capacity filled 2.6M Ft³ (42%)



WIPP LWA Capacity (Cubic Feet)



■ LWA Remaining Capacity

Safe Transportation

- Received 473 shipment in FY 2023
- Averaging 10 – 12 shipments/week
- Total shipments received
 - 13,679
- Total loaded miles traveled
 - 16,366,610
- Recent shipments completed:
 - June 56
 - July 39
 - August 58



As of 10/02/2023

Panel 8

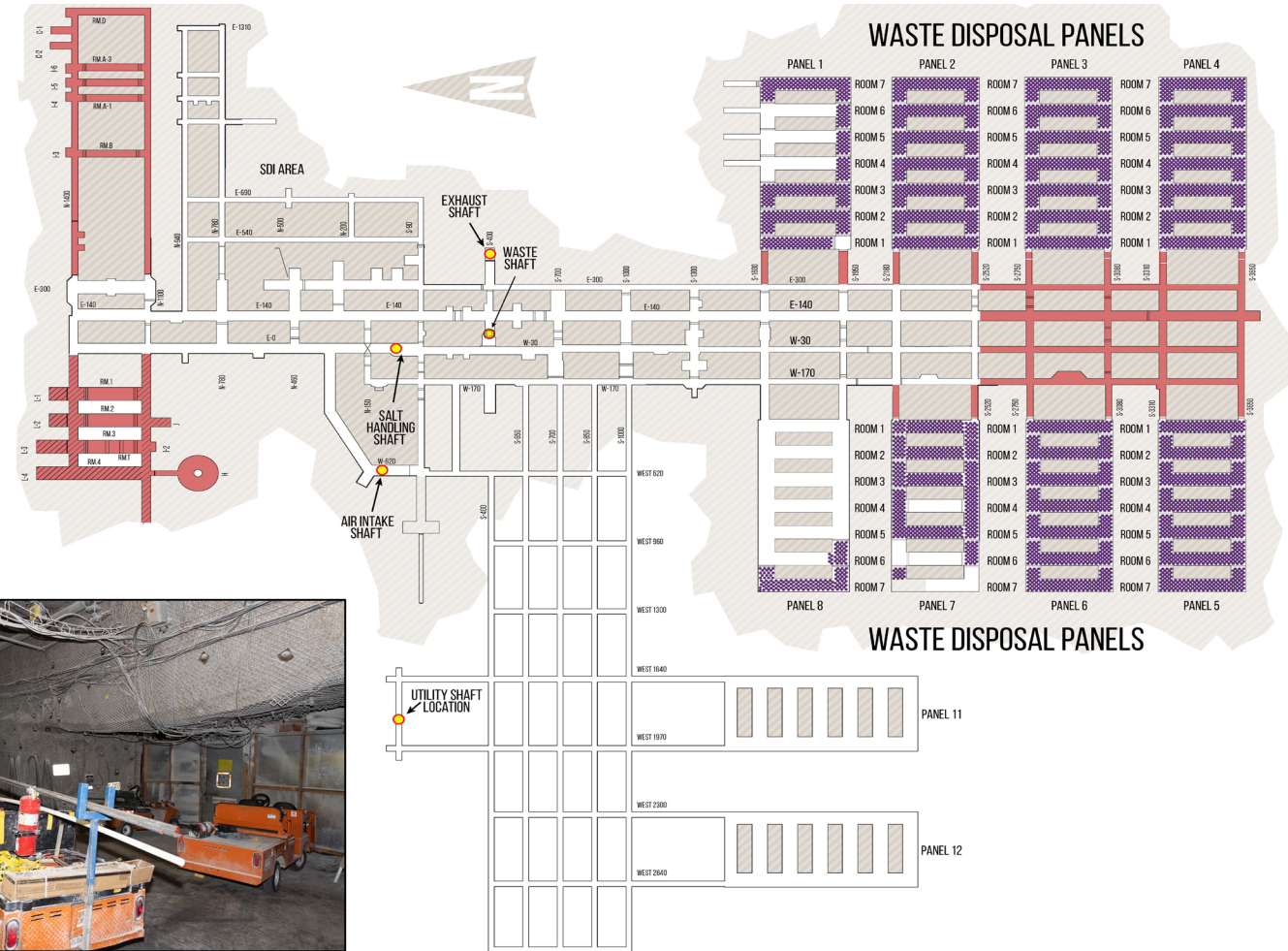
- Waste emplacement began in November 2022
- Currently emplacing in Room 6, Panel 8
- Use of protective clothing not required
- Containers emplaced:
 - 10,558

As of 10/02/2023



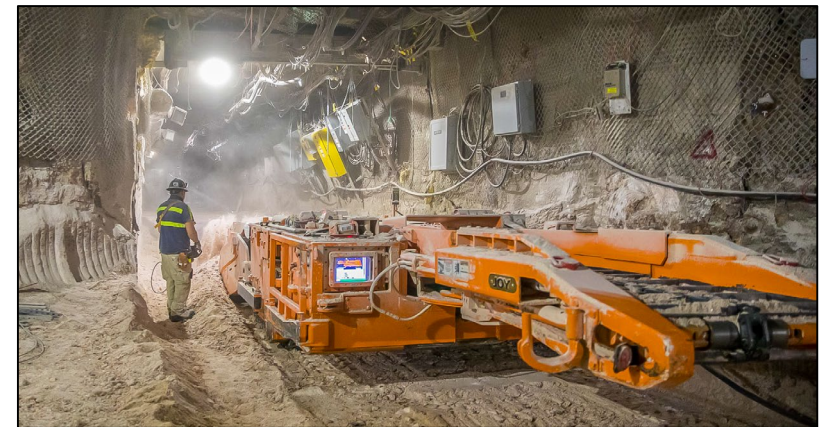
Underground Status

- Mining done on just-in-time basis due to salt creep
- Currently mining access drifts to the west
- Drifts will tie into the Utility Shaft and replacement panels 11 and 12
- Preparing to equip west mains with infrastructure
- Mine Safety and Health Administration Inspections



Infrastructure Investments

- Projects will:
 - Reduce maintenance down time
 - Improve operational efficiencies
 - Increase annual shipping rate
- Safety Significant Confinement Ventilation System (SSCVS)
- Utility Shaft (US)
- General Plan Project (GPP)



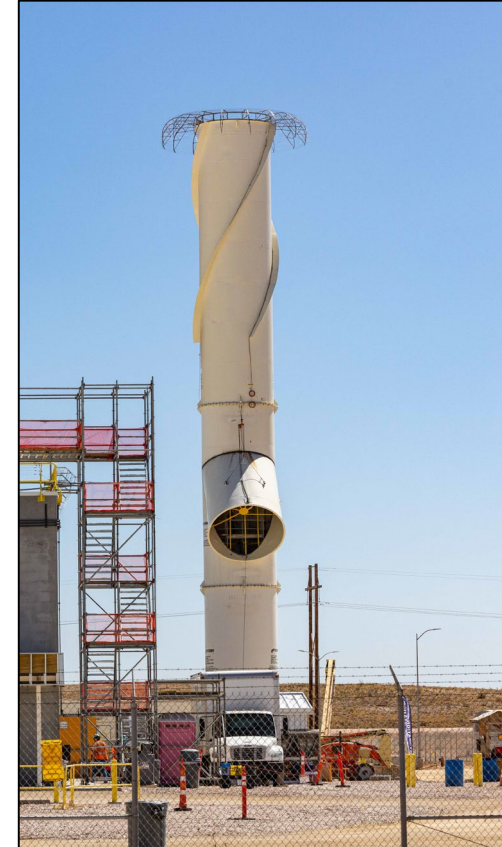
Capital Projects

Safety Significant Confinement Ventilation System (SSCVS)

Increasing airflow to the underground
540,000 cfm

Progress

- Overall project about 79 percent complete
 - New Filter Building (NFB) about 80 percent complete
 - Salt Reduction Building (SRB) about 93 percent complete
- Exhaust stack now complete
- Asphalt work underway



Capital Project – Utility Shaft

- Providing higher-capacity air intake for the underground in conjunction with SSCVS system
 - Shaft sinking complete (2,275 feet)
 - 30-foot diameter shaft
 - (26-feet with liner in place)
- Station development is underway
- Mining equipment will be lowered to station
- Mining drifts to tie into existing underground



General Plant Projects

- Fire system improvements
- Substation upgrades
- Public address system
- SSCVS tie-ins
- Fuel station



Permit Changes

- Prioritizing legacy waste clean-up and disposal at WIPP, including LANL
- Legacy TRU Waste Disposal Plan developed
- Requiring DOE to report progress on siting another repository
- Reporting oil, gas and saltwater disposal operations within one mile of WIPP facility
- Enhanced public participation



Educational Investments

- Southeast New Mexico College grant
 - \$12 million
- Regional Science Bowl
- Teacher grants
- Non-profit grants
- Cal Ripken STEM centers



Community Involvement in Eddy/Lea Counties

- Educational outreach
- Career fairs
- Employee volunteers
- SIMCO hired small business program manager

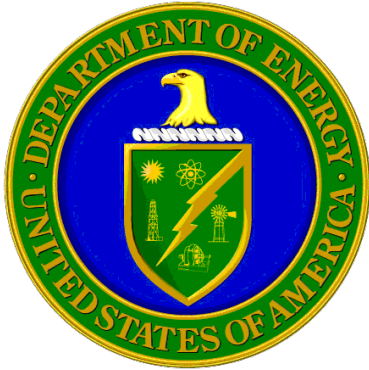


Clean Up to Clean Energy

- The goal will be to identify and prioritize opportunities where there is the potential for onsite clean electricity projects, to include soliciting feedback from the private sector in terms of interest in utilizing DOE land for deploying clean electricity projects.

Program Element	Site		Acreage Available
EM	Hanford Site		19,000
	WIPP		9,240
	SRS	Site A	3,000
		Site B	2,700
		Site C	2,600
		Site D	2,300
		Site E	2,600
NNSA	Nevada National Security Site (NNSS)		4 - ~2,000 acre areas

Career Opportunities



Carlsbad Field Office

<https://wipp.energy.gov/cbfo-careers.asp>



SIMCO

wippsnm.hrmdirect.com



NAVARRO

<https://careers.navarro-inc.com>





@wippnews

@wippnews

Questions



/WIPPNews

@wippnews



U.S. DEPARTMENT OF
ENERGY | OFFICE OF
ENVIRONMENTAL
MANAGEMENT