

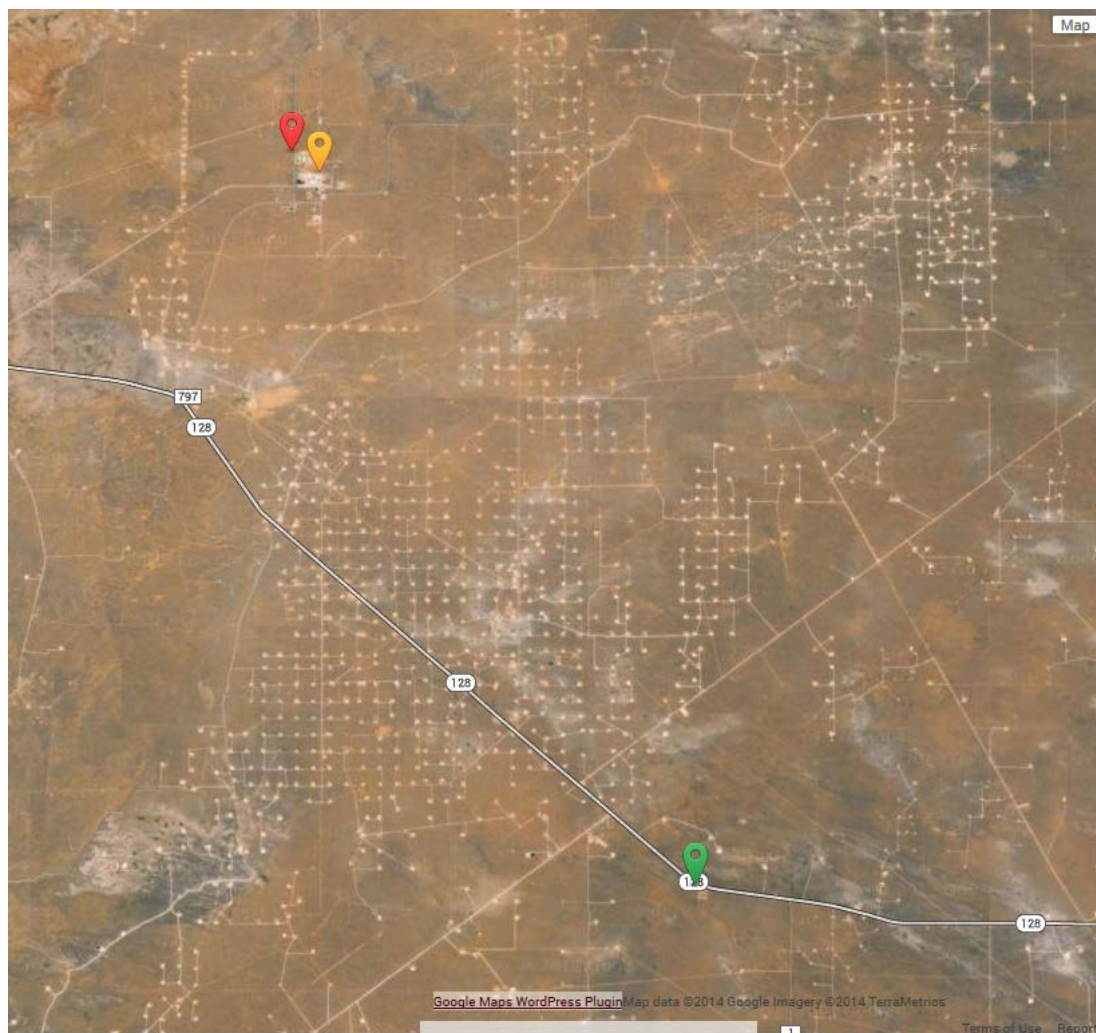
Carlsbad Environmental Monitoring & Research Center

Mayor's Town Hall Presentation

Dr. Russell Hardy, Director



CEMRC Ambient Air Sampler Locations



Sampling Site	Sample Period	Am241 Bq/Sample	Pu239+240 Bq/Sample	Pu238 Bq/Sample
<i>On Site #106</i>				
109 Yards NW of WIPP Exh. Shaft	2/11/14 - 2/18/14	1.300	0.115	0.004
	2/18/14 - 2/25/14	0.020	0.004	0.004
	2/25/14 - 3/4/14	0.007		
	3/4/14 - 3/11/14	n/d	n/d	n/d
	3/11/14 - 3/21/14	0.013	n/d	n/d
	3/21/14 - 3/29/14	0.0005	n/d	n/d
	3/29/14 - 4/4/14	0.0005	n/d	n/d
	<i>Near Field #107</i>			
0.6 Miles NW of WIPP Exh. Shaft	2/11/14 - 2/16/14	0.645	0.046	n/d
	2/16/14 - 2/18/14	0.007	n/d	n/d
	2/18/14 - 2/25/14	0.017	0.005	n/d
	2/25/14 - 3/4/14	0.004	0.001	n/d
	3/4/14 - 3/11/14	n/d	n/d	n/d
	3/11/14 - 3/21/14	0.002	n/d	n/d
	3/21/14 - 3/29/14	Recounting	Recounting	Recounting
	3/29/14 - 4/4/14	0.0004	n/d	Recounting
<i>Cactus Flats #108</i>				
11.8 Miles SE of WIPP Exh. Shaft	2/11/14 - 2/16/14	n/d	n/d	n/d
	2/16/14 - 2/18/14	0.005	n/d	n/d
	2/18/14 - 2/25/14	0.007	0.001	n/d
	2/25/14 - 3/4/14	n/d	n/d	n/d
	3/4/14 - 3/11/14	0.001	n/d	n/d
	3/11/14 - 3/21/14	0.002	0.002	n/d
	3/21/14 - 3/29/14	n/d	Recounting	Recounting
	3/29/14 - 4/4/14	n/d	n/d	n/d

n/d = no detection (activity below minimum detectable concentrations)

WIPP Exhaust Shaft Monitoring Station A



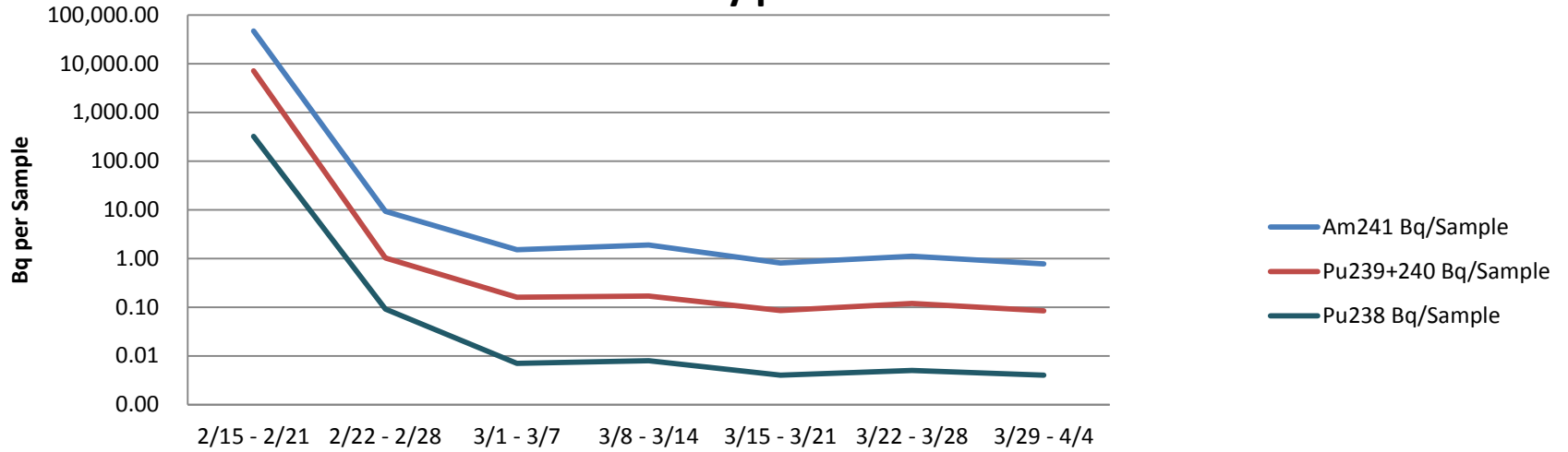
WIPP Exhaust Monitoring Station B



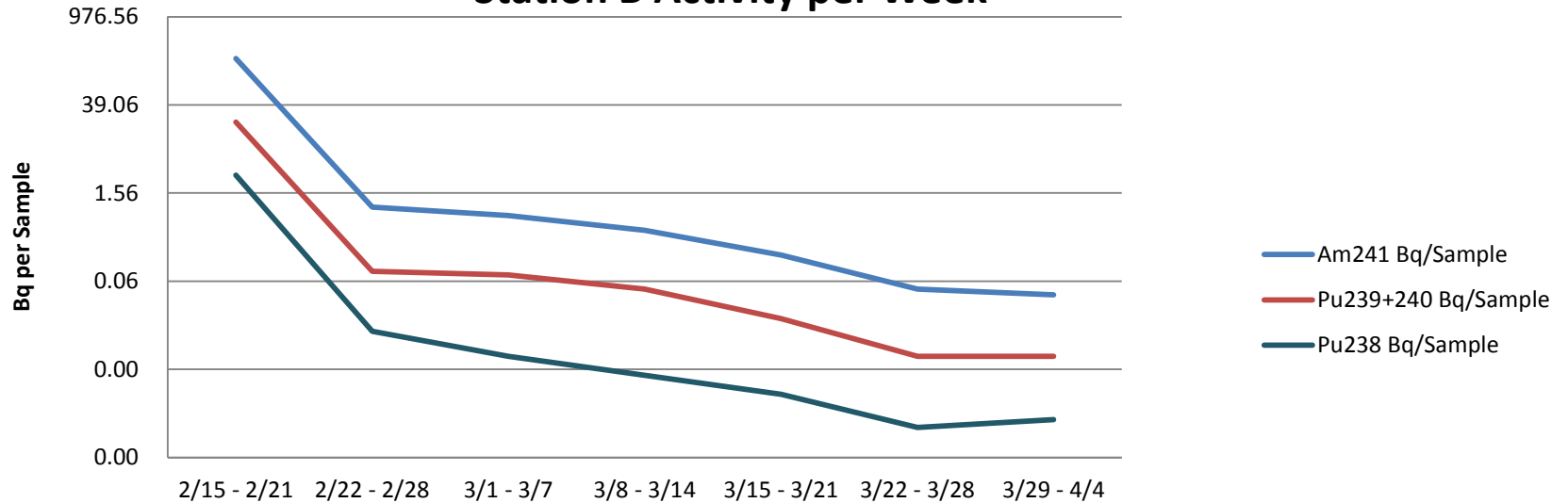
Station A (pre-HEPA) and Station B (post-HEPA) Results

<i>Sampling Station A - Pre-HEPA</i>				<i>Sampling Station B - Post-HEPA</i>			
Week	Am241 Bq/Sample	Pu239+240 Bq/Sample	Pu238 Bq/Sample	Week	Am241 Bq/Sample	Pu239+240 Bq/Sample	Pu238 Bq/Sample
2/15 - 2/21	46,614.18	7,103.16	322.54	2/15 - 2/21	213.08	20.94	3.00
2/22 - 2/28	9.24	1.02	0.092	2/22 - 2/28	0.94	0.09	0.010
3/1 - 3/7	1.51	0.16	0.007	3/1 - 3/7	0.69	0.08	0.004
3/8 - 3/14	1.90	0.17	0.008	3/8 - 3/14	0.40	0.05	0.002
3/15 - 3/21	0.81	0.09	0.004	3/15 - 3/21	0.16	0.02	0.001
3/22 - 3/28	1.12	0.12	0.005	3/22 - 3/28	0.05	0.004	0.0003
3/29 - 4/4	0.78	0.08	0.004	3/29 - 4/4	0.04	0.004	0.0004

Station A Activity per Week



Station B Activity per Week



Surface Water Results

Reservoir - Sample Type	Am241 Bq/Liter	Pu239+240 Bq/Liter	Pu238 Bq/Liter
Red Bluff - Shallow	n/d	n/d	n/d
Red Bluff - Deep	n/d	n/d	n/d
Brantley - Shallow	n/d	n/d	n/d
Brantley - Deep	n/d	n/d	n/d
Brantley - Shallow Duplicate	n/d	n/d	n/d
Brantley - Deep Duplicate	n/d	n/d	n/d
Lower Tansil - Shallow	n/d	n/d	n/d
Lower Tansil - Duplicate	n/d	n/d	n/d
n/d = no detection (activity below minimum detectable concentrations)			



Soil Sampling Activities

