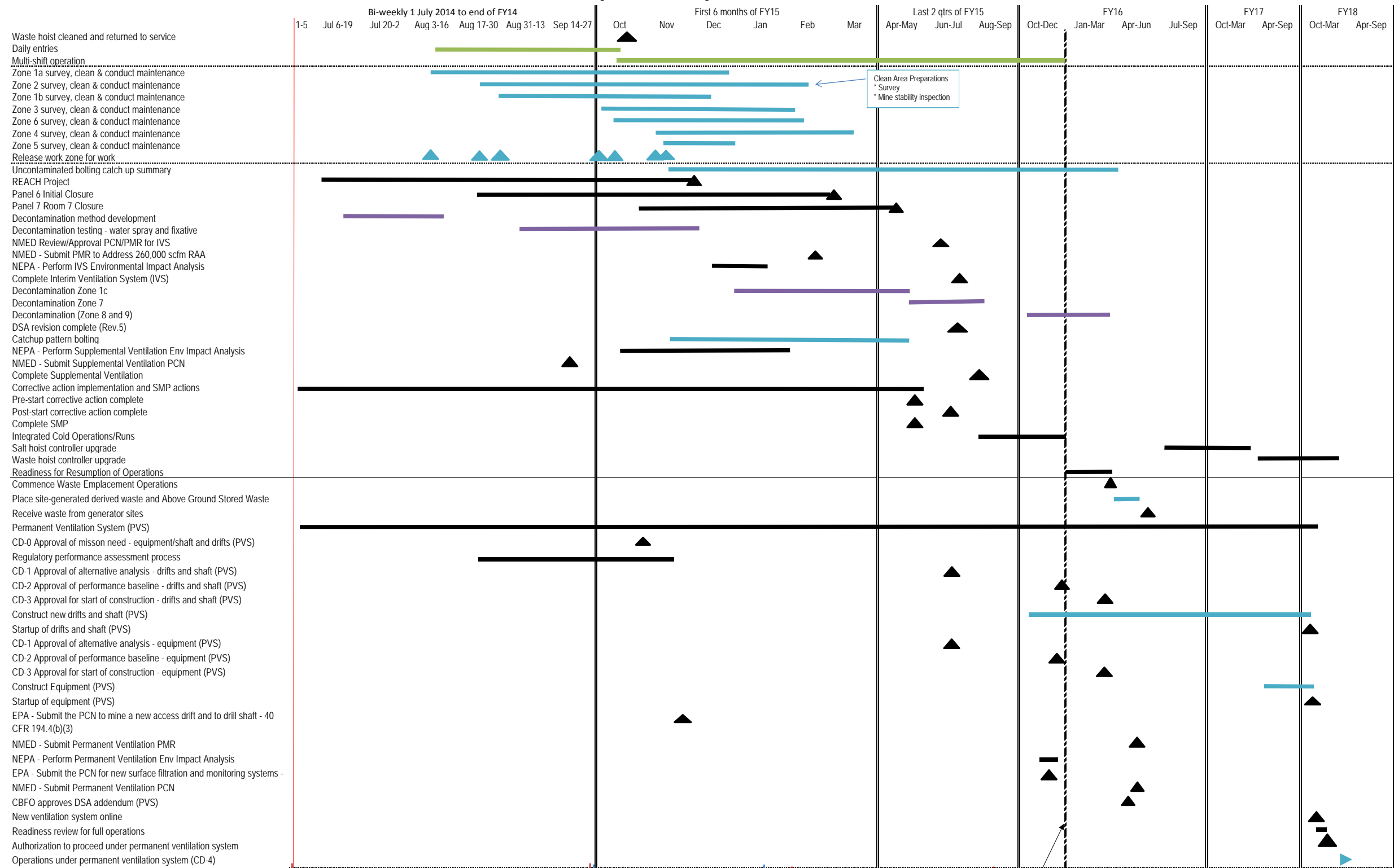


WIPP Recovery Plan Summary Schedule, Rev. 3 Schedule



**Footnote for Zone Descriptions**  
**Zone 1a:** Drift W30 from S90 to S700, Drift E140 from S700 to S90  
**Zone 2:** Area around the waste shaft station  
**Zone 1b:** Drift W30 from S700 to S1950, Drift E140 from S1950 to S700, and cross drifts at S1000, S1300, S1600 and S1950  
**Zone 3:** Drifts from S-400 to N-1100  
**Zone 6:** Exhaust shaft area and other areas  
**Zone 4:** Experimental areas  
**Zone 5:** Panel 8  
**Zone 1c:** Drift W30 from S1950 to S3080, Drift E140 from S3080 to S1950, and cross drifts at S2180, S2520, S2750 and S3080  
**Zone 7:** Panel 7 including rooms 1 to 7 and the exhaust drifts  
**Zone 8 and Zone 9:** Contaminated areas at the south end of the mine with boundaries defined by characterization: The exhaust drift and exhaust shaft

**Footnote for Permanent ventilation system**  
 Detail activities are located in the "Permanent Vent Sys" Project

Limited entry due to necessary waste hoist servicing  
 Limited air through existing HEPA system  
 Interim ventilation through skid mounted HEPA unit  
 Supplemental ventilation  
 New ventilation system operational

Current regulatory milestone for panel 1-6 final closure

**Bar Legend**

- Hoisting
- Operations
- Decontamination
- Other