

CARLSBAD TOWN HALL MEETING

U.S. Department of Energy
Waste Isolation Pilot Plant (WIPP)

April 10, 2014



Meeting Agenda

- Opening Comments – Mayor Janway
- Update on Entries, Additional Recovery Items – Dana Bryson, Tammy Reynolds
- Environmental Sampling – Stewart Jones
- Environmental Protection Agency
- Worth Noting – Dana Bryson
 - Shipments to Waste Control Specialists
- Audience Questions
 - One question at a time please

UPDATE ON ENTRIES

Dana Bryson, CBFO Deputy Manager

Tammy Reynolds, NWP Deputy Recovery Manager

Re-Entry

- Unmanned Entry
 - Salt Shaft
 - Air Intake Shaft
- Air quality good
- No radiological contamination detected
- Completed March 7-8



Phase 1



Phase 2A

Phase 2B

Phase 3

Re-Entry

- Manned Entry down the Salt Shaft
- Two eight-person teams
- Established base; tested communication and safety equipment
- Surveyed to Air Intake Shaft
- Set up four continuous air monitors
- Completed April 2



Phase 1



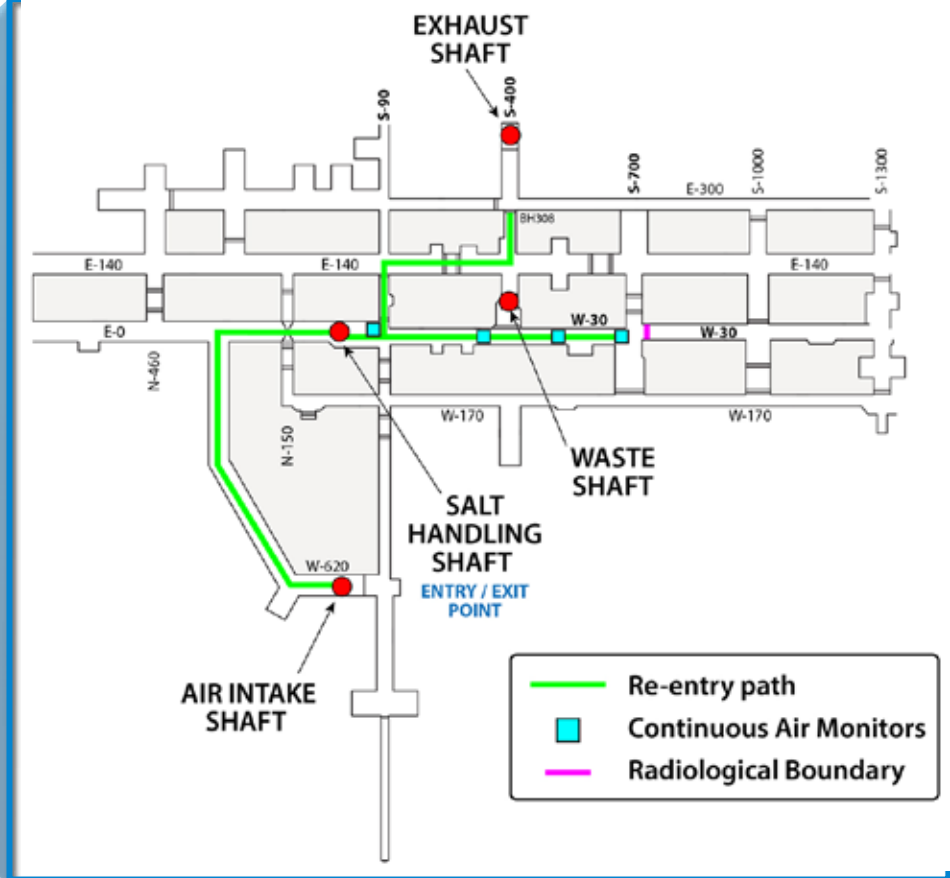
Phase 2A



Phase 2B

Phase 3

Re-Entry



- Phase 2A remained north of S700 drift

Phase 1



Phase 2A



Phase 2B

Phase 3

Re-Entry

- Establish work area
- Two eight-person teams
- Proceeded south to S1600
- Set up four continuous air monitors
- Tested communication and safety equipment
- Completed April 4



Phase 1



Phase 2A



Phase 2B



Phase 3



Phase 3

Phase 3 Re-entry: Identify Scene of Event

- Survey from S-1600 to Panel 7 or Panel 6
- Identify source of contamination



Phase 1



Phase 2A

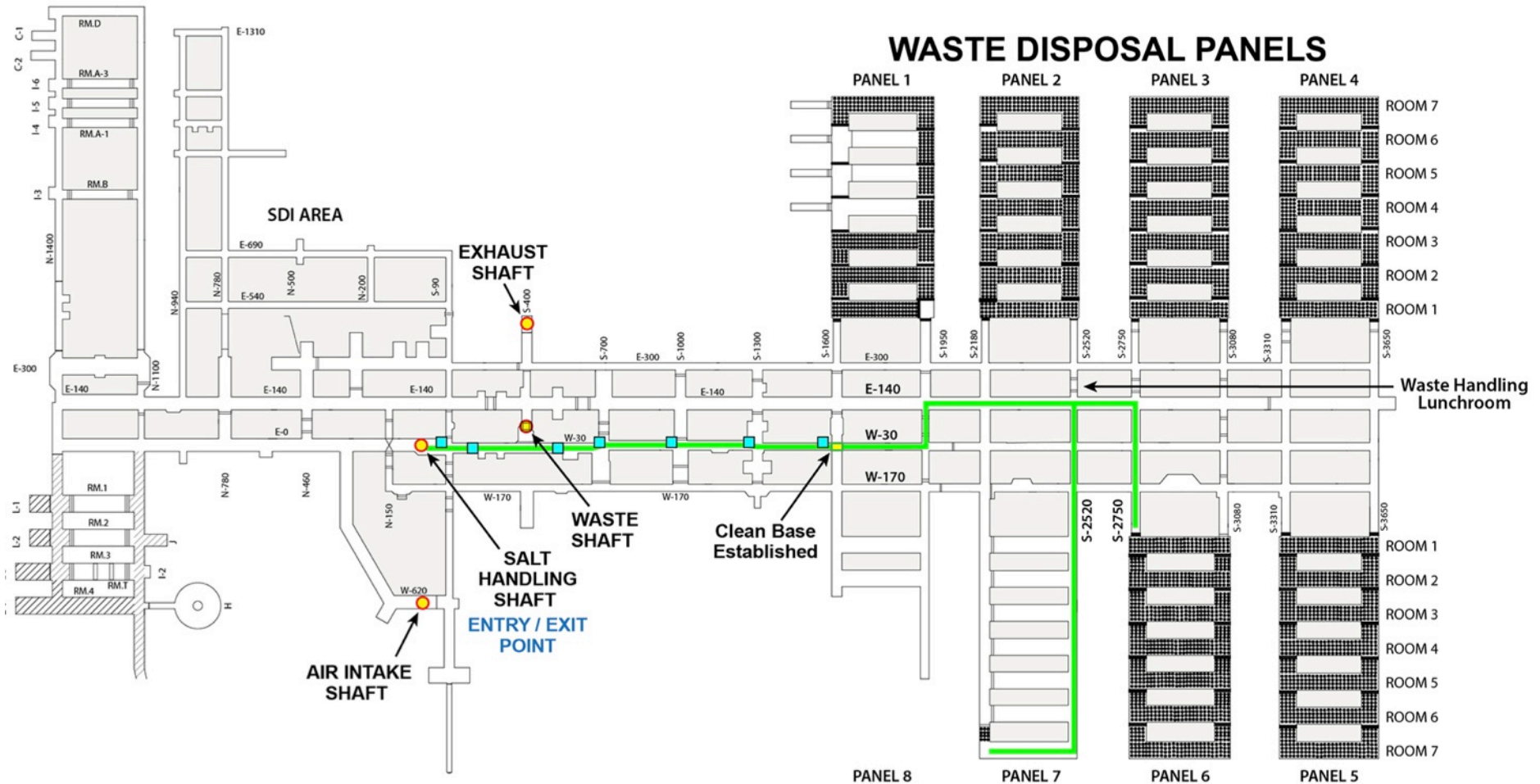


Phase 2B



Phase 3

Phase 3 Route Map



Phase 1



Phase 2A



Phase 2B



Phase 3

Recovery - Next Steps

- Continuous Air Monitor (CAM) installed at Station B
 - Provides real time radiological information on exhaust stack air
 - Installation completed
 - Validating operation and procedures
 - Will be utilized to trigger protective actions
- Replacement of Filter Banks



- Mock-up being performed next week to validate the procedures, equipment and allow personnel to gain proficiency
- Task Readiness – Mid May

Station A & B Results (Onsite Monitoring)

Readings have dropped dramatically since February 14

- **Station A**

(Before filtration)

- **Day of Event** – 8.2M dpm Alpha; 8K for Beta
- **Past Few Weeks** – Levels have hovered around 15 dpm Alpha and primarily Minimum Detectable Activity (MDA) for Beta

- **Station B**

(After filtration)

- **Day of Event** – 57K dpm Alpha; MDA for Beta
- **Past Few Weeks** – Levels have steadily decreased to MDA for Alpha and Beta



ENVIRONMENTAL SAMPLING

Stewart Jones

Environmental Sampling Overview

- 84 air samples
- 43 surface water & sediment samples
- 39 vegetation samples
- 49 soil samples
- 1 wildlife sample
- **216 total samples**

All recent results
have come back as
below Minimum
Detectable
Concentration
(MDC)

Sampling Results

- Air, 84 samples taken
 - 58 samples analyzed, 5 samples above the minimum detectable concentration (MDC), 53 samples below MDC
- Surface Water, 29 samples taken
 - 16 samples analyzed, 2 samples above MDC (QA duplicate), 14 samples below MDC



Sampling Results *(continued)*

- Sediment, 14 samples taken
 - awaiting laboratory analyses
 - Sediment sample locations are co-located with off-site surface water sample locations
- Vegetation, 39 samples taken
 - 7 samples analyzed, 7 samples below MDC
- Soil, 49 samples taken
 - 17 samples analyzed, 1 sample above MDC, 16 samples below MDC

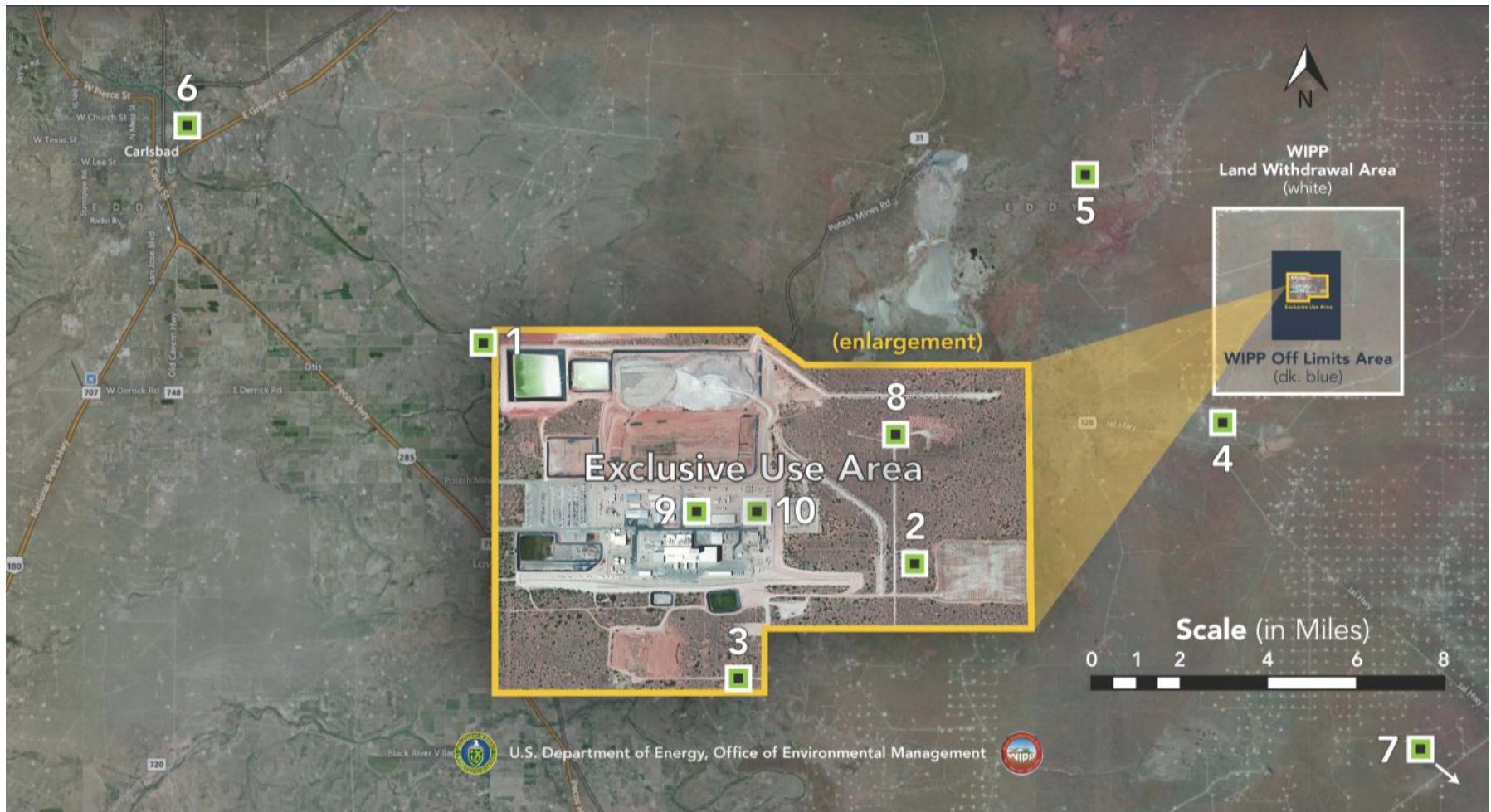
Are livestock being sampled?

- No, however, other wildlife has been sampled
 - Quail, 1 sample taken
 - Awaiting analyses
 - Location: Adjacent to WIPP facility

Original Air Sampling Locations

Location	Estimated Distance from Exhaust Outlet	Direction from Exhaust Outlet	Status
WIPP Far Field	981 yards	NW	Active
WIPP East	381 yards	E	Active
WIPP South	571 yards	S	Active
Range Land (South of WIPP)	3.4 miles	SW	Active
Range Land (Northwest of WIPP)	5.5 miles	NW	Active
Carlsbad	25 miles	NW	Active
Southeast Control	12 miles	SE	Active

Air Monitoring Stations



New Air Sampling Locations

Location	Estimated Distance from Exhaust Outlet	Direction from Exhaust Outlet	Status
Meteorology Tower Building (MET)	436 yards	NE	Active
Salt Hoist (SLT)	210 yards	NW	Active
Training Building (STB)	16 yards	NW	Active
Guard & Security Building (GSB)	360 yards	W	Active
Hobbs (HBS)	50 miles	NE	Active
Eunice (EUN)	40 miles	E	Active
Loving (LVG)	19 miles	SW	Active
Artesia (ART)	43 miles	NW	Active
Potash Mines Road (PMR)	17 miles	NW	Expected operational 5/20/14, awaiting power utility refurbishment
Range Land (East of Brantley Lake)	33 miles	NW	Expected operational 5/20/14, awaiting power utility refurbishment

ENVIRONMENTAL PROTECTION AGENCY

WORTH NOTING

Dana Bryson

CBFO Deputy Manager

First LANL Shipment Arrives at WCS

- **Enables WIPP to support LANL to eliminate a radiological release hazard during a wildfire**
- **Arrival occurred around 6 a.m. Wednesday**
 - Los Alamos National Laboratory – Carlsbad mobile loading teams processed the shipping containers
 - Waste containers have been safely secured at the WCS facility
 - About 100 shipments remain of the 3706 Campaign
 - Plan to average about 10 shipments a week



QUESTIONS AND ANSWERS
